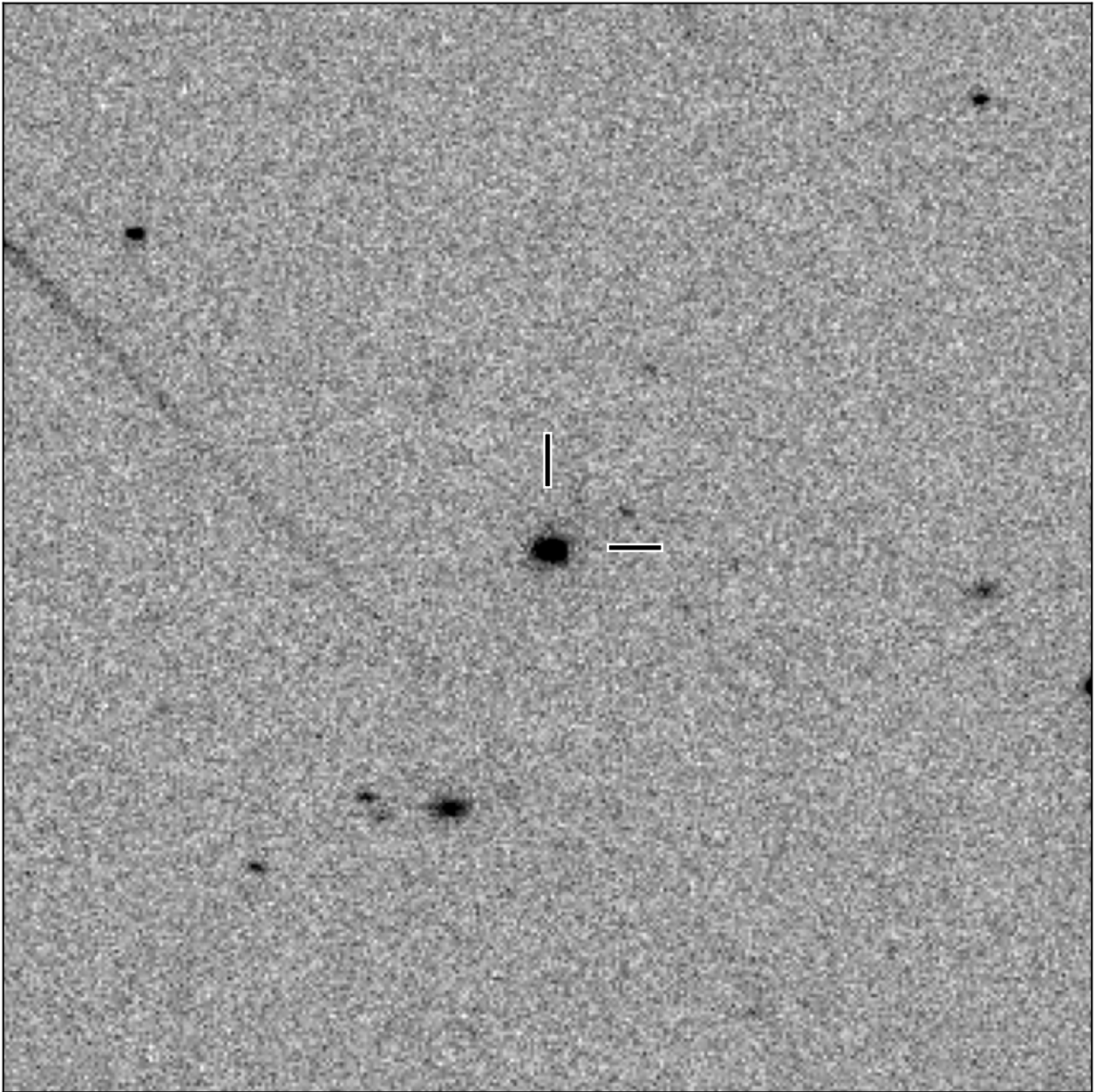


BlackGEM-4 finding chart for BGEM J110641.57+064001.3

North

East



1'

Target: BGEM J110641.57+064001.3
RA (ICRS): 11:06:41.58 (166.6732 deg)
DEC (ICRS): 6:40:01.39 (6.6671 deg)
Image: BG4_20240104_060443_red
Filter: q
Limiting magnitude: 20.65 (5σ)
Finding chart size: 3.0x3.0 arcmin