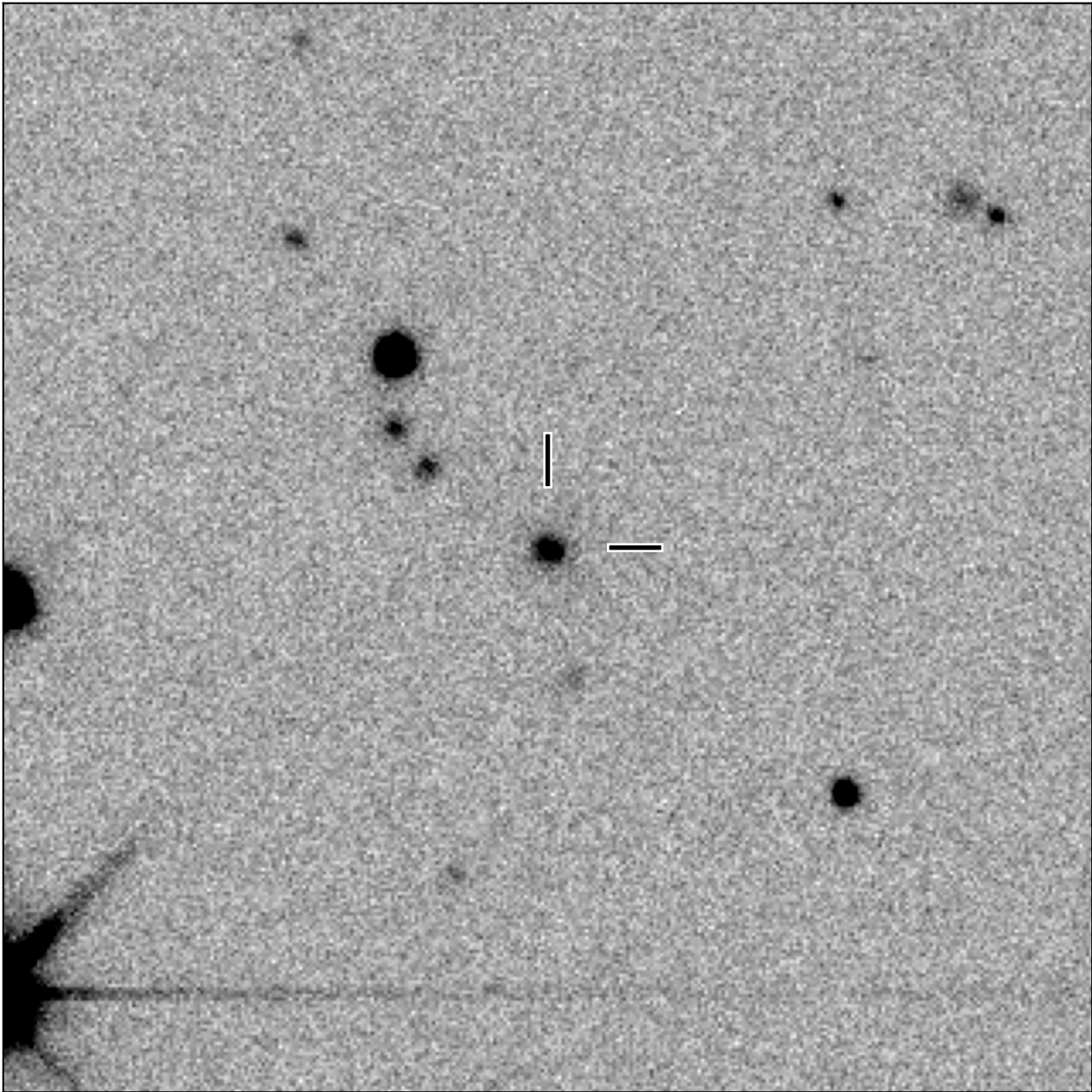


BlackGEM-4 finding chart for BGEM J012047.30+232926.5

North

East



1'

Target: BGEM J012047.30+232926.5
RA (ICRS): 1:20:47.30 (20.1971 deg)
DEC (ICRS): 23:29:26.58 (23.4907 deg)
Image: BG3_20241104_034811_red
Filter: q
Limiting magnitude: 20.76 (5σ)
Finding chart size: 3.0x3.0 arcmin