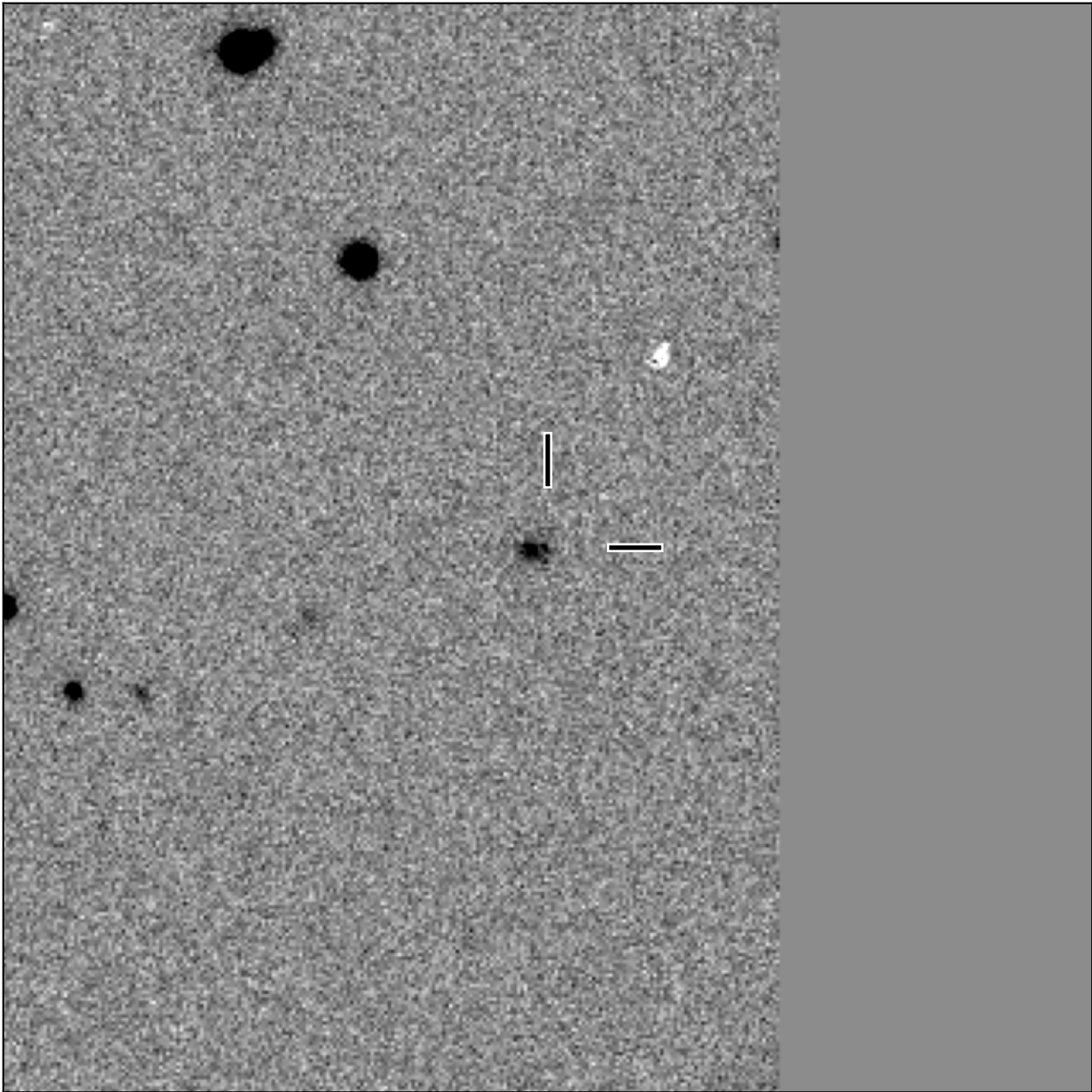


BlackGEM-4 finding chart for BGEM J045520.19+015625.4

North

East



1'

Target: BGEM J045520.19+015625.4
RA (ICRS): 4:55:20.20 (73.8342 deg)
DEC (ICRS): 1:56:25.50 (1.9404 deg)
Image: BG4_20241119_055606_red
Filter: q
Limiting magnitude: 20.10 (5σ)
Finding chart size: 3.0x3.0 arcmin