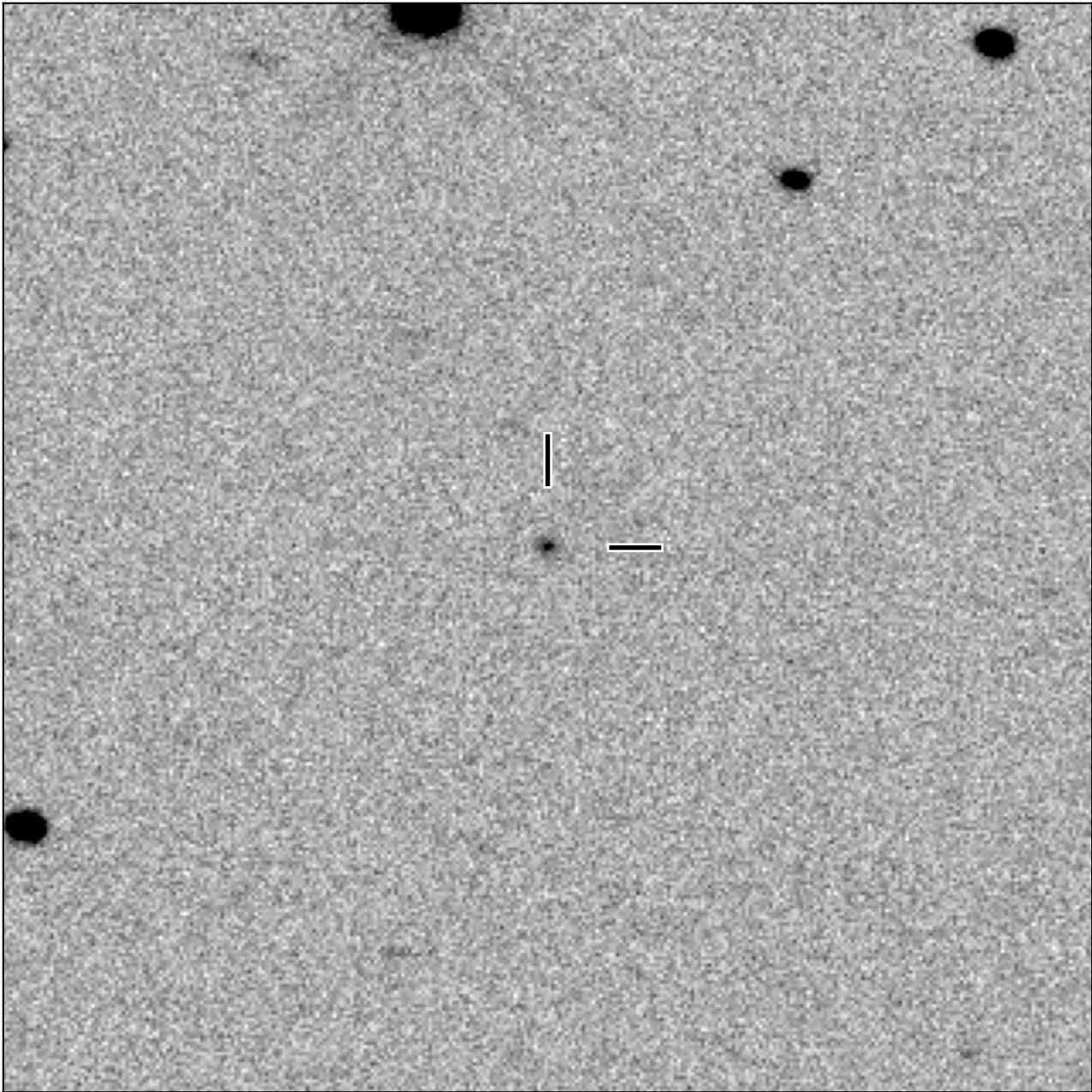


# BlackGEM-2 finding chart for BGEM J092905.07+024159.8

North

East



1'

Target: BGEM J092905.07+024159.8  
RA (ICRS): 9:29:05.08 (142.2712 deg)  
DEC (ICRS): 2:41:59.85 (2.7000 deg)  
Image: BG2\_20241203\_064906\_red  
Filter: q  
Limiting magnitude: 20.77 ( $5\sigma$ )  
Finding chart size: 3.0x3.0 arcmin