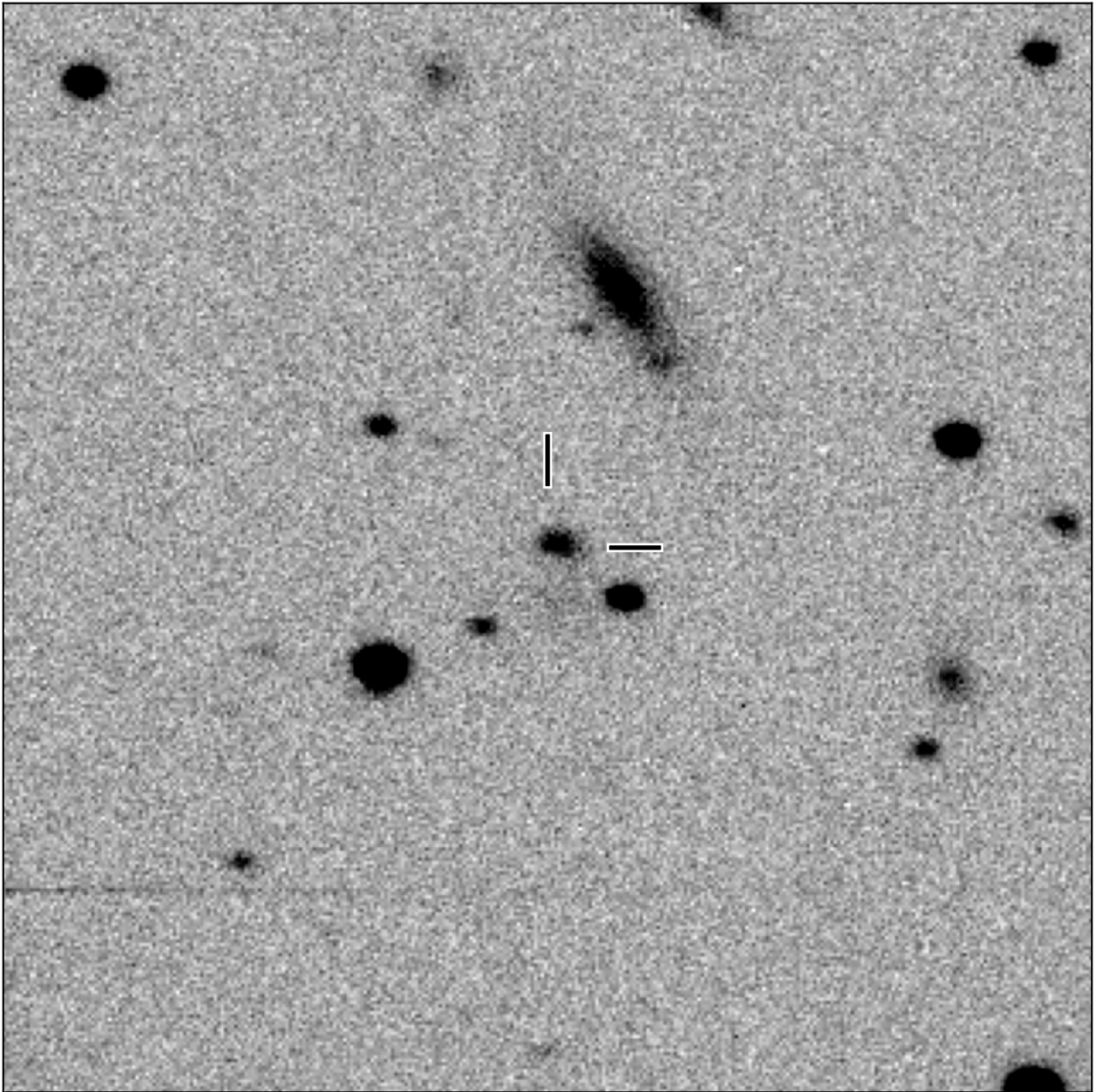


# BlackGEM-2 finding chart for BGEM J081959.70+210315.7

North

East



1'

Target: BGEM J081959.70+210315.7  
RA (ICRS): 8:19:59.71 (124.9988 deg)  
DEC (ICRS): 21:03:15.75 (21.0544 deg)  
Image: BG2\_20241203\_062459\_red  
Filter: q  
Limiting magnitude: 20.57 ( $5\sigma$ )  
Finding chart size: 3.0x3.0 arcmin