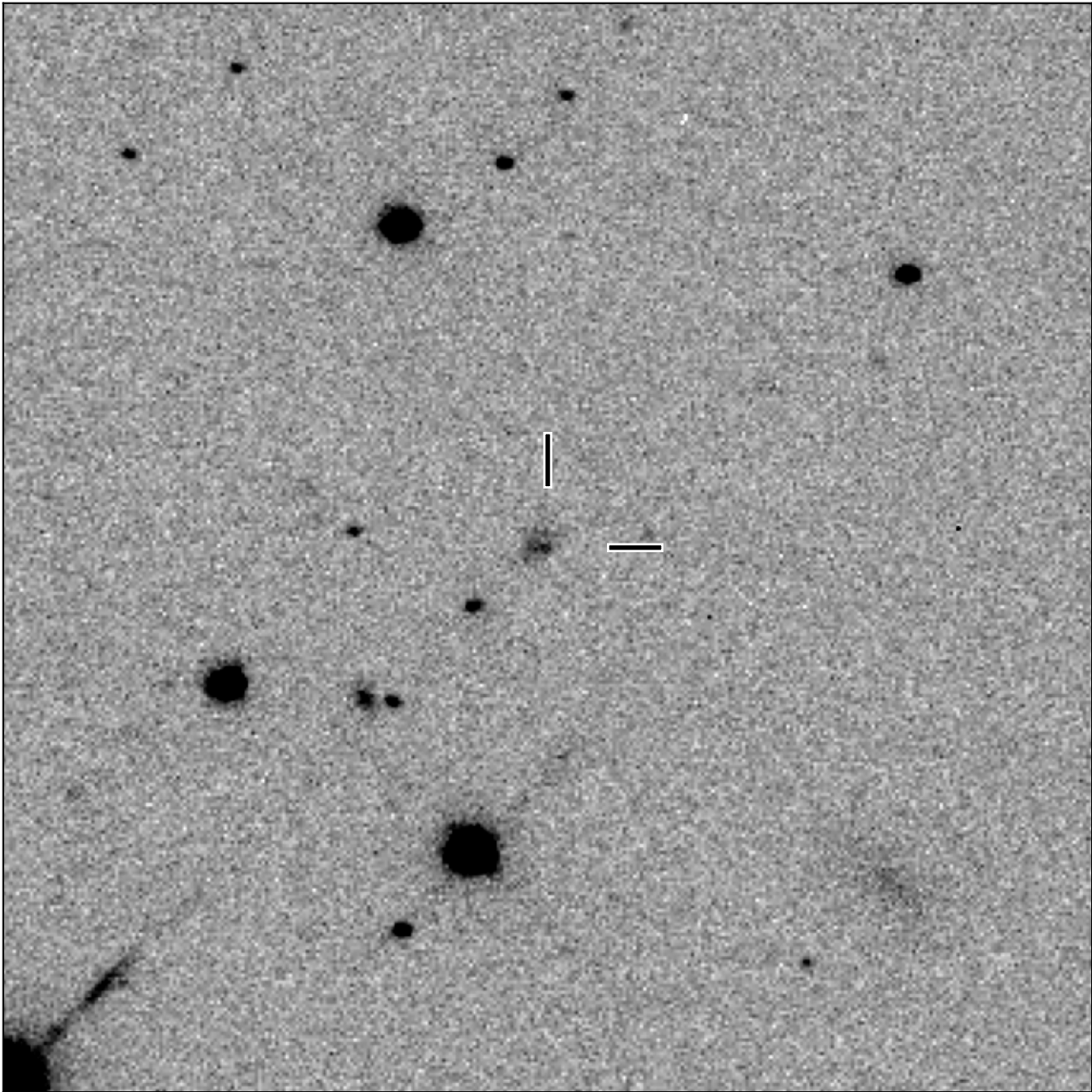


BlackGEM-4 finding chart for BGEM J103143.67-273351.0

North

East



1'

Target: BGEM J103143.67-273351.0
RA (ICRS): 10:31:43.68 (157.9320 deg)
DEC (ICRS): -27:33:51.01 (-27.5642 deg)
Image: BG4_20240106_054609_red
Filter: q
Limiting magnitude: 21.40 (5σ)
Finding chart size: 3.0x3.0 arcmin