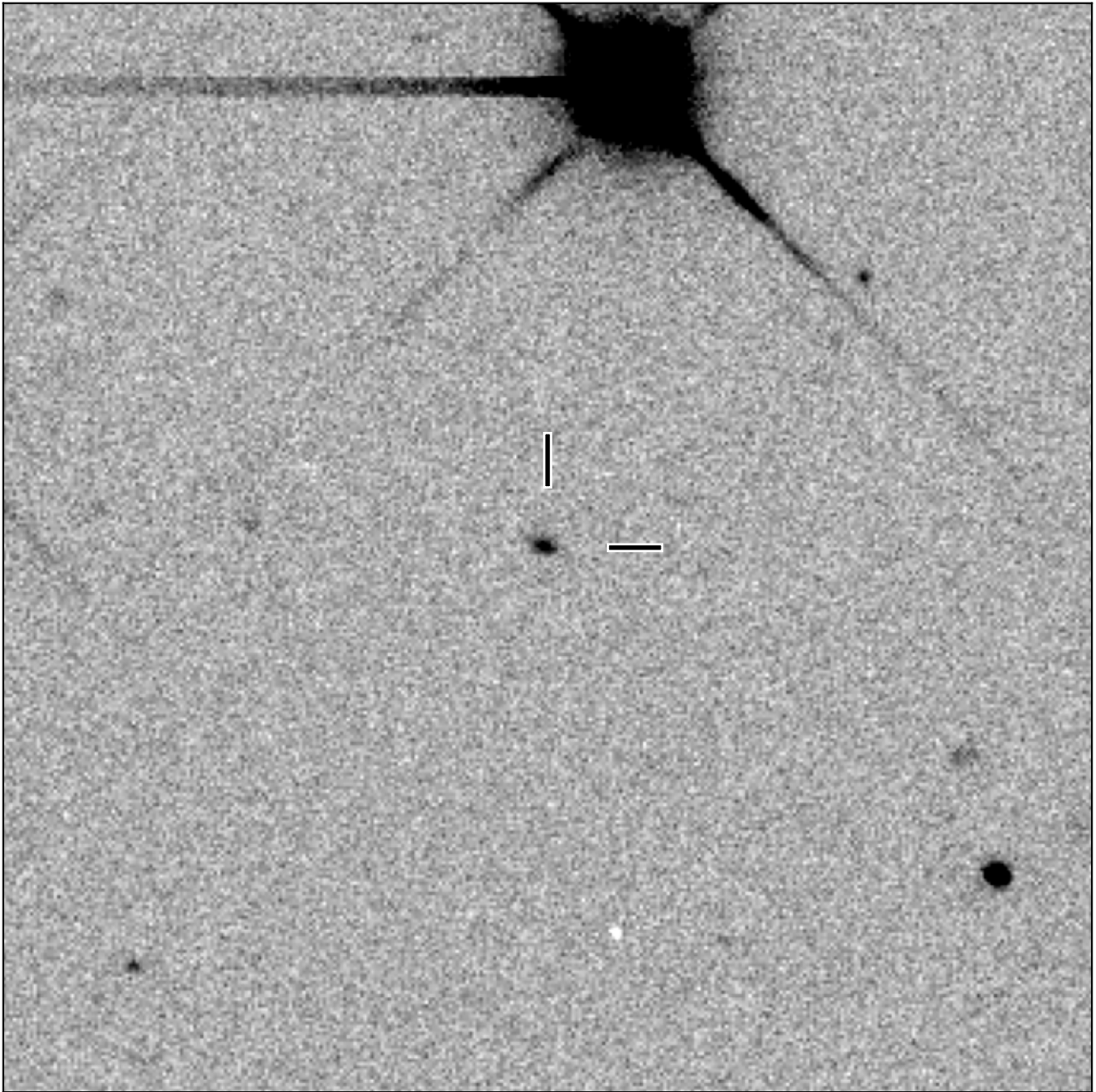


BlackGEM-4 finding chart for BGEM J104836.50+153859.7

North

East



1'

Target: BGEM J104836.50+153859.7
RA (ICRS): 10:48:36.51 (162.1521 deg)
DEC (ICRS): 15:38:59.75 (15.6499 deg)
Image: BG4_20240118_045625_red
Filter: q
Limiting magnitude: 21.17 (5σ)
Finding chart size: 3.0x3.0 arcmin