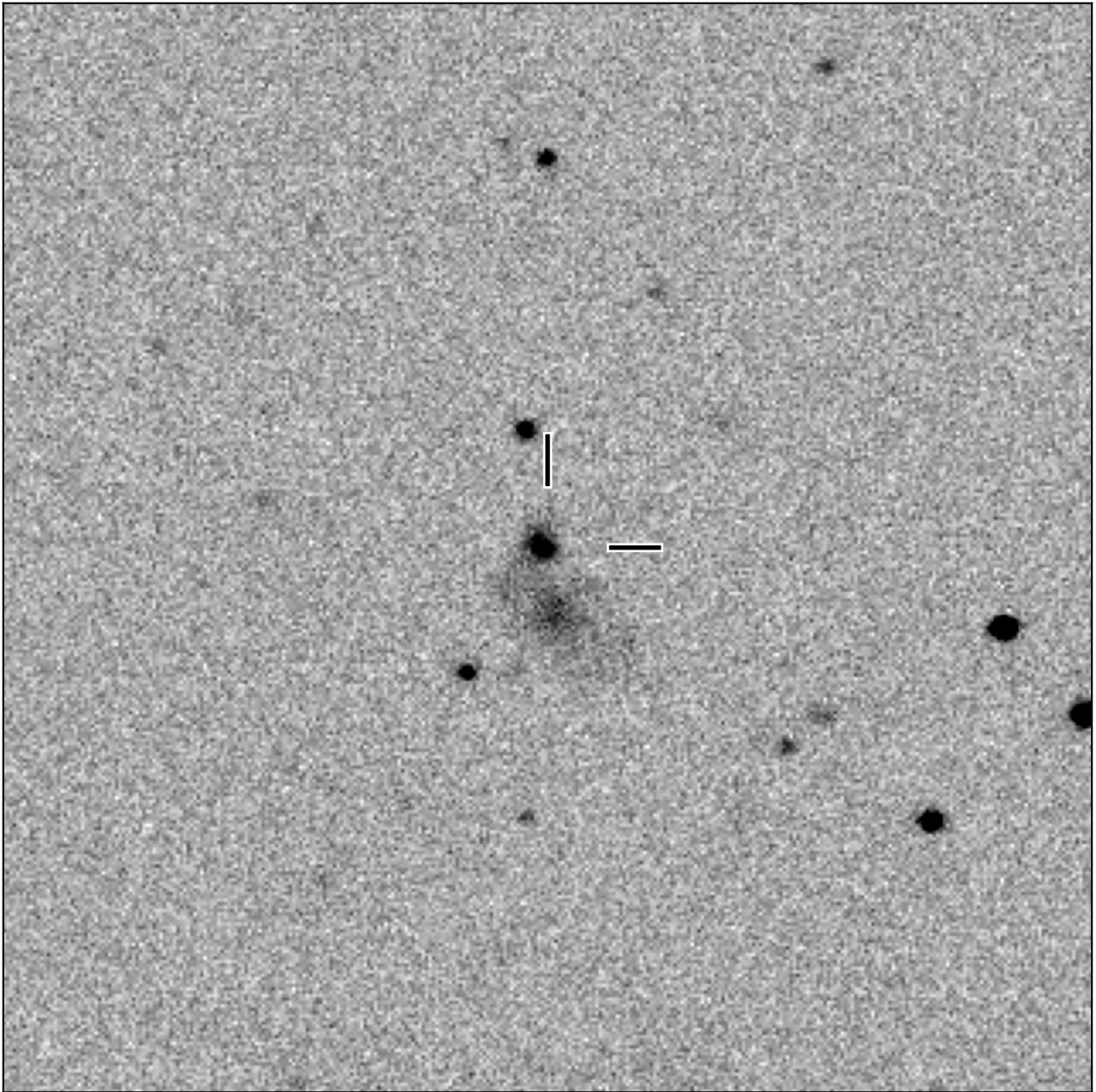


# BlackGEM-2 finding chart for BGEM J145333.78+030640.8

North

East



1'

Target: BGEM J145333.78+030640.8  
RA (ICRS): 14:53:33.78 (223.3908 deg)  
DEC (ICRS): 3:06:40.86 (3.1113 deg)  
Image: BG2\_20240313\_044118\_red  
Filter: q  
Limiting magnitude: 21.10 ( $5\sigma$ )  
Finding chart size: 3.0x3.0 arcmin