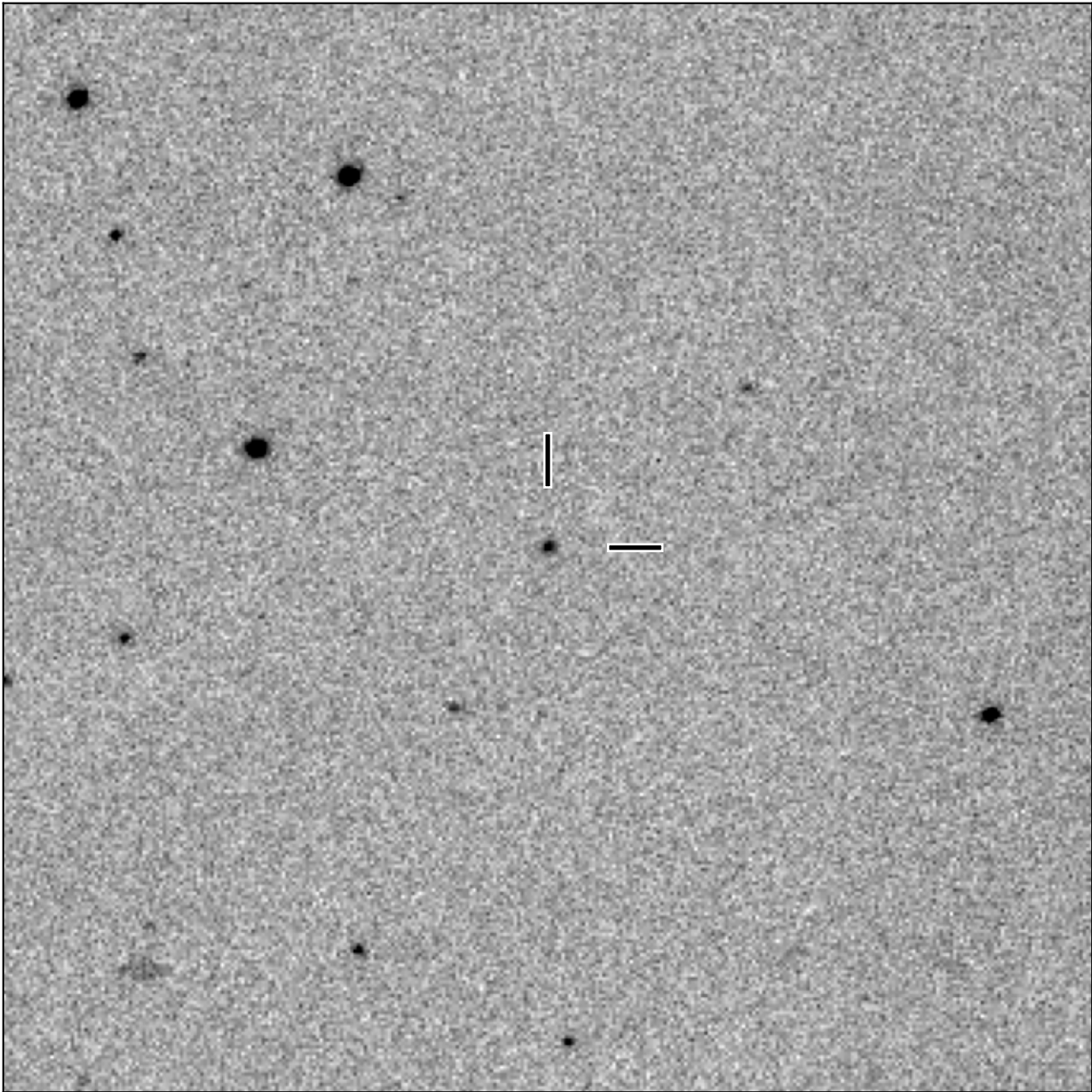


BlackGEM-2 finding chart for BGEM J093134.95-125124.2

North

East



1'

Target: BGEM J093134.95-125124.2
RA (ICRS): 9:31:34.96 (142.8957 deg)
DEC (ICRS): -12:51:24.29 (-12.8567 deg)
Image: BG2_20240409_010546_red
Filter: i
Limiting magnitude: 20.42 (5σ)
Finding chart size: 3.0x3.0 arcmin