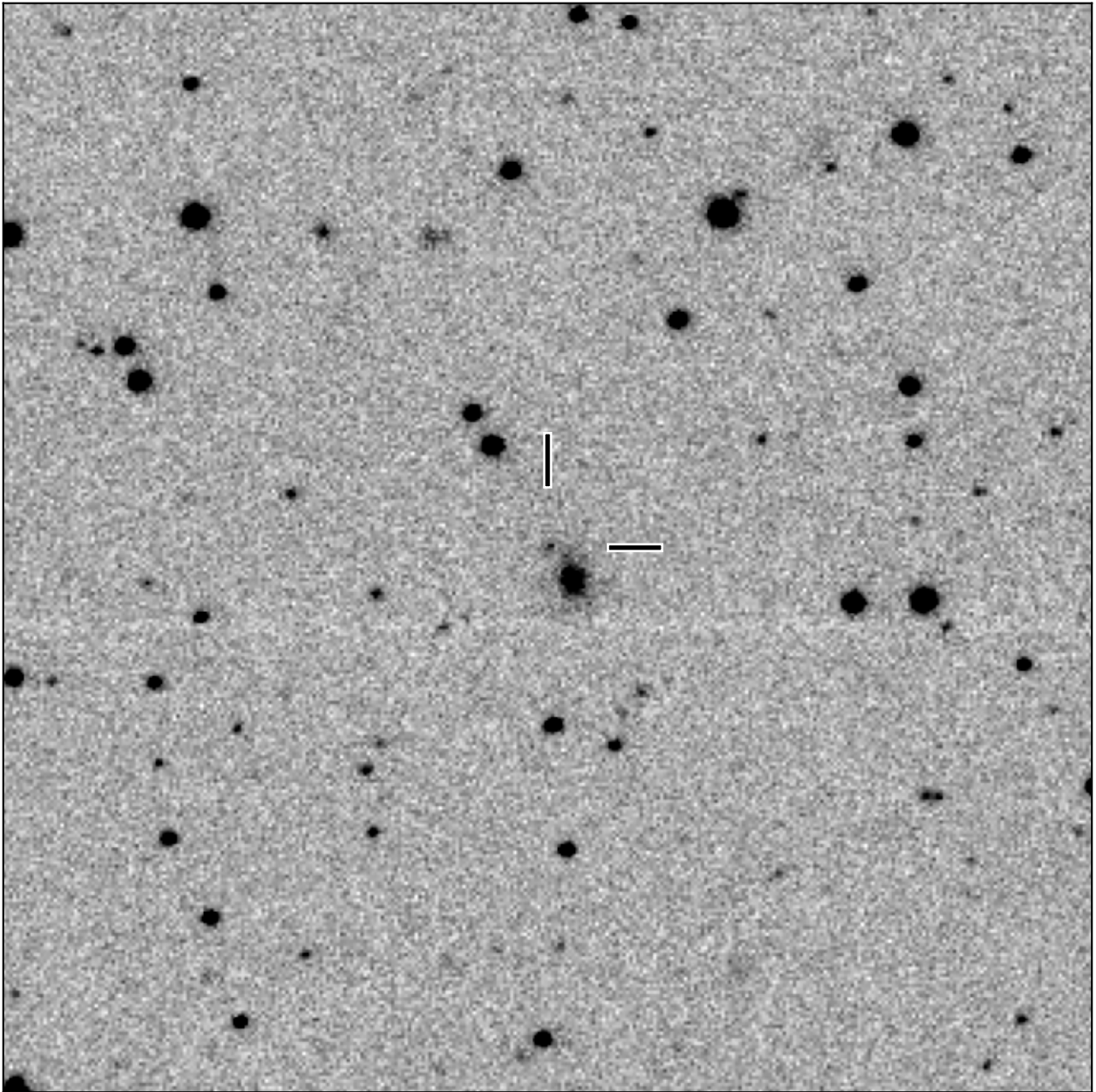


BlackGEM-2 finding chart for BGEM J085140.89-275430.5

North

East



1'

Target: BGEM J085140.89-275430.5
RA (ICRS): 8:51:40.90 (132.9204 deg)
DEC (ICRS): -27:54:30.54 (-27.9085 deg)
Image: BG2_20240418_235239_red
Filter: i
Limiting magnitude: 19.97 (5σ)
Finding chart size: 3.0x3.0 arcmin