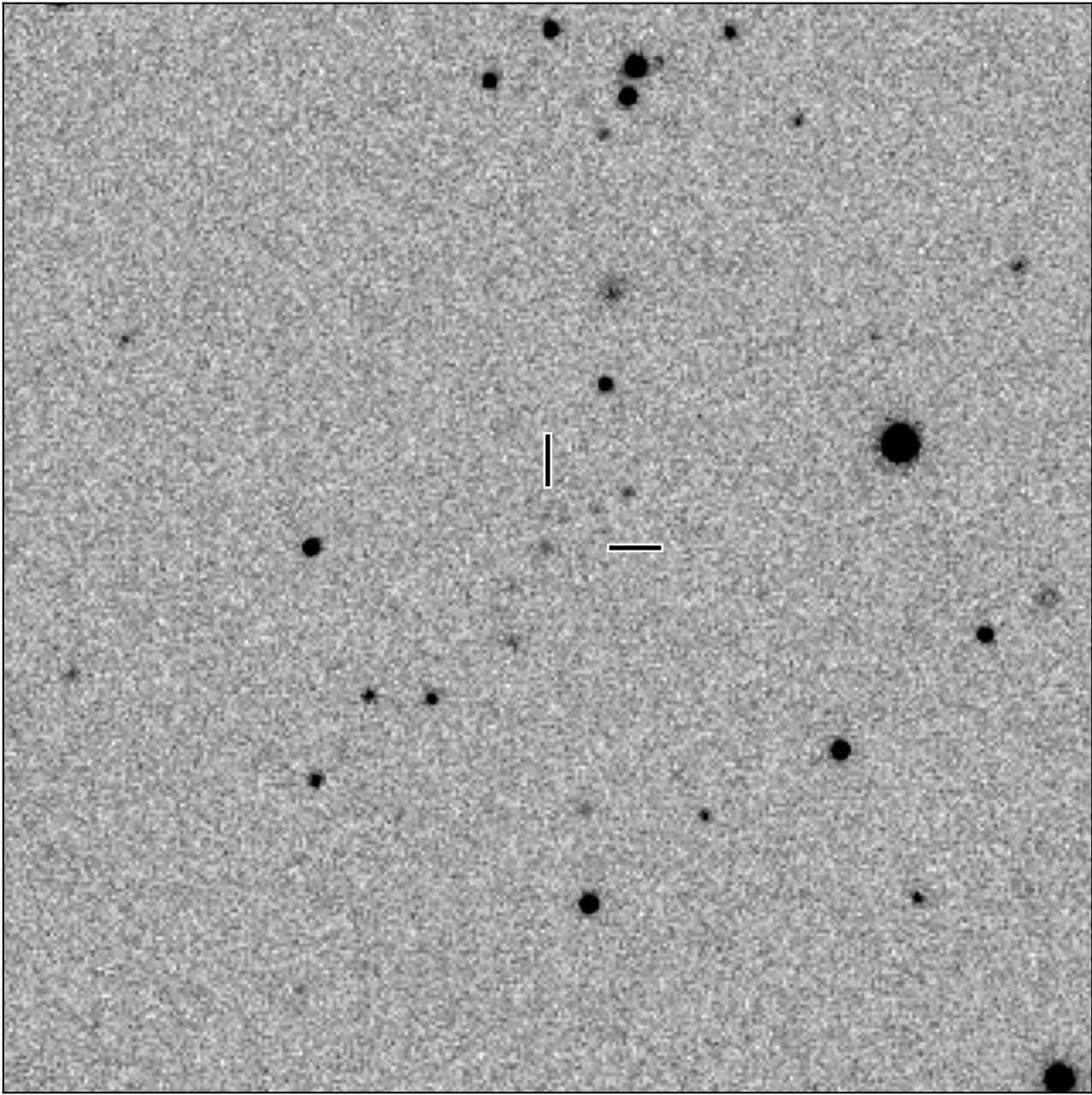


BlackGEM-2 finding chart for BGEM J144245.10-245619.0

North

East



1'

Target: BGEM J144245.10-245619.0
RA (ICRS): 14:42:45.10 (220.6879 deg)
DEC (ICRS): -24:56:19.02 (-24.9386 deg)
Image: BG2_20240420_043122_red
Filter: i
Limiting magnitude: 20.09 (5σ)
Finding chart size: 3.0x3.0 arcmin