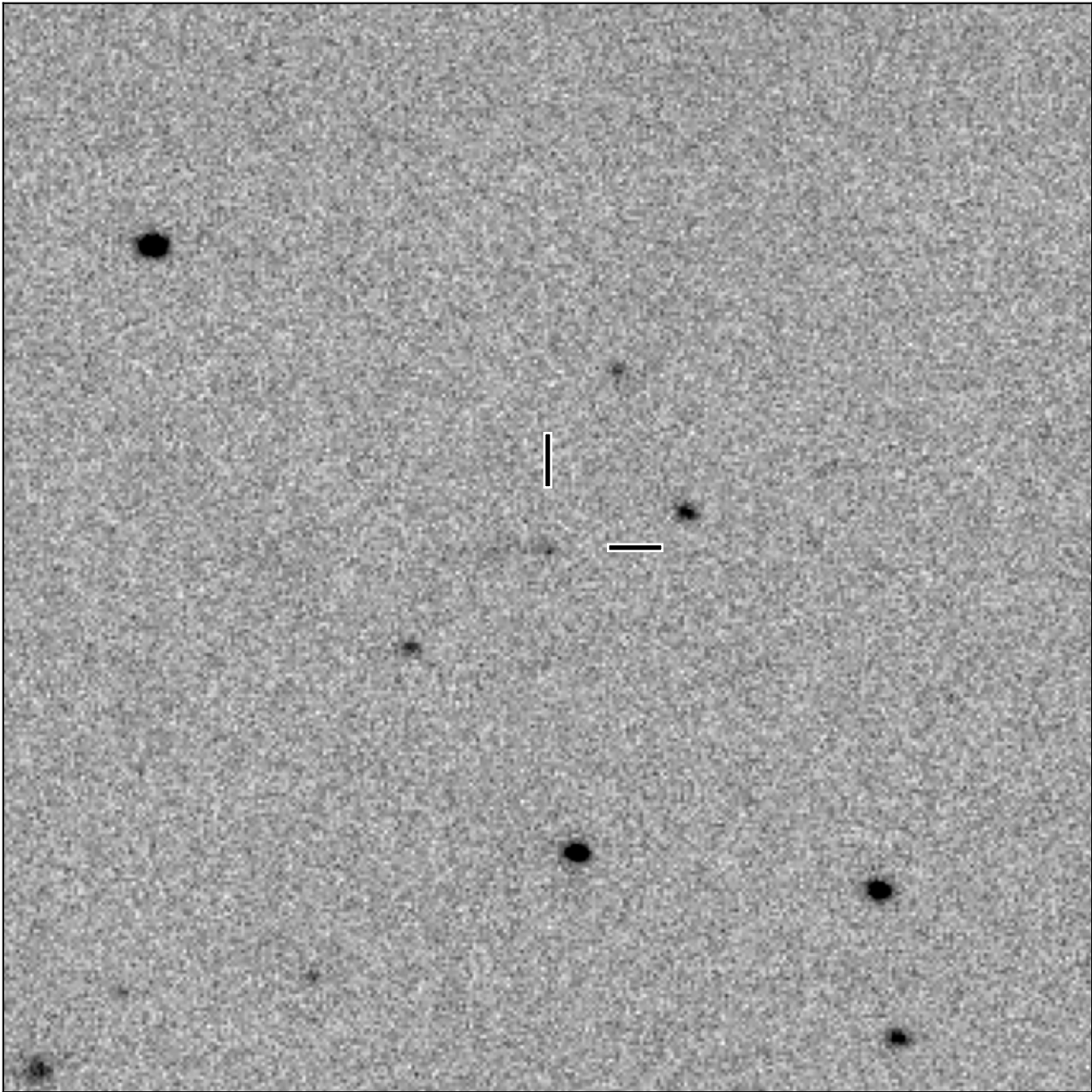


# BlackGEM-2 finding chart for BGEM J140116.79+094210.1

North

East



1'

Target: BGEM J140116.79+094210.1  
RA (ICRS): 14:01:16.79 (210.3200 deg)  
DEC (ICRS): 9:42:10.20 (9.7028 deg)  
Image: BG2\_20240617\_002654\_red  
Filter: q  
Limiting magnitude: 19.79 ( $5\sigma$ )  
Finding chart size: 3.0x3.0 arcmin