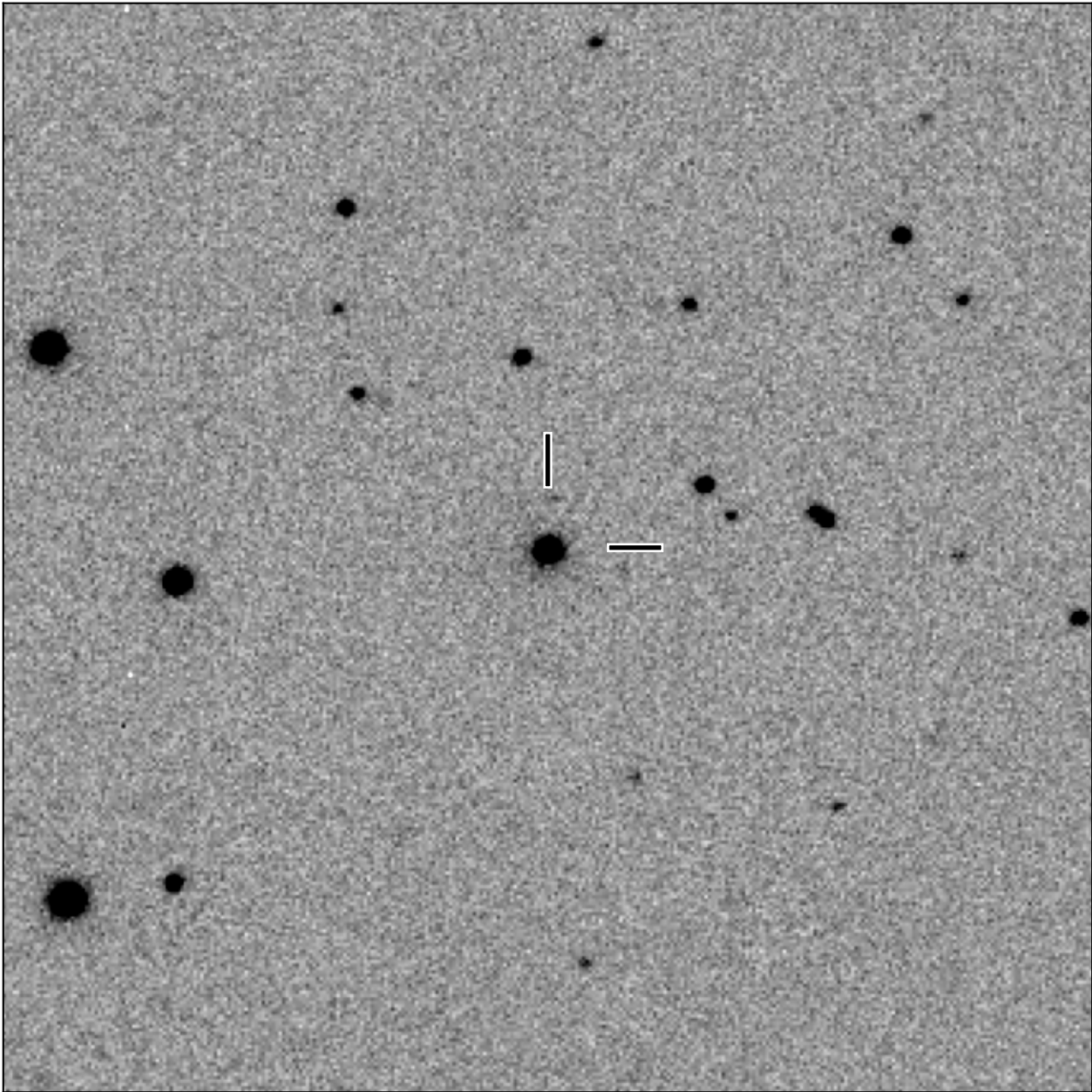


# BlackGEM-2 finding chart for BGEM J154938.72-071427.9

North

East



1'

Target: BGEM J154938.72-071427.9  
RA (ICRS): 15:49:38.73 (237.4114 deg)  
DEC (ICRS): -7:14:27.98 (-7.2411 deg)  
Image: BG2\_20240701\_033610\_red  
Filter: q  
Limiting magnitude: 21.44 ( $5\sigma$ )  
Finding chart size: 3.0x3.0 arcmin