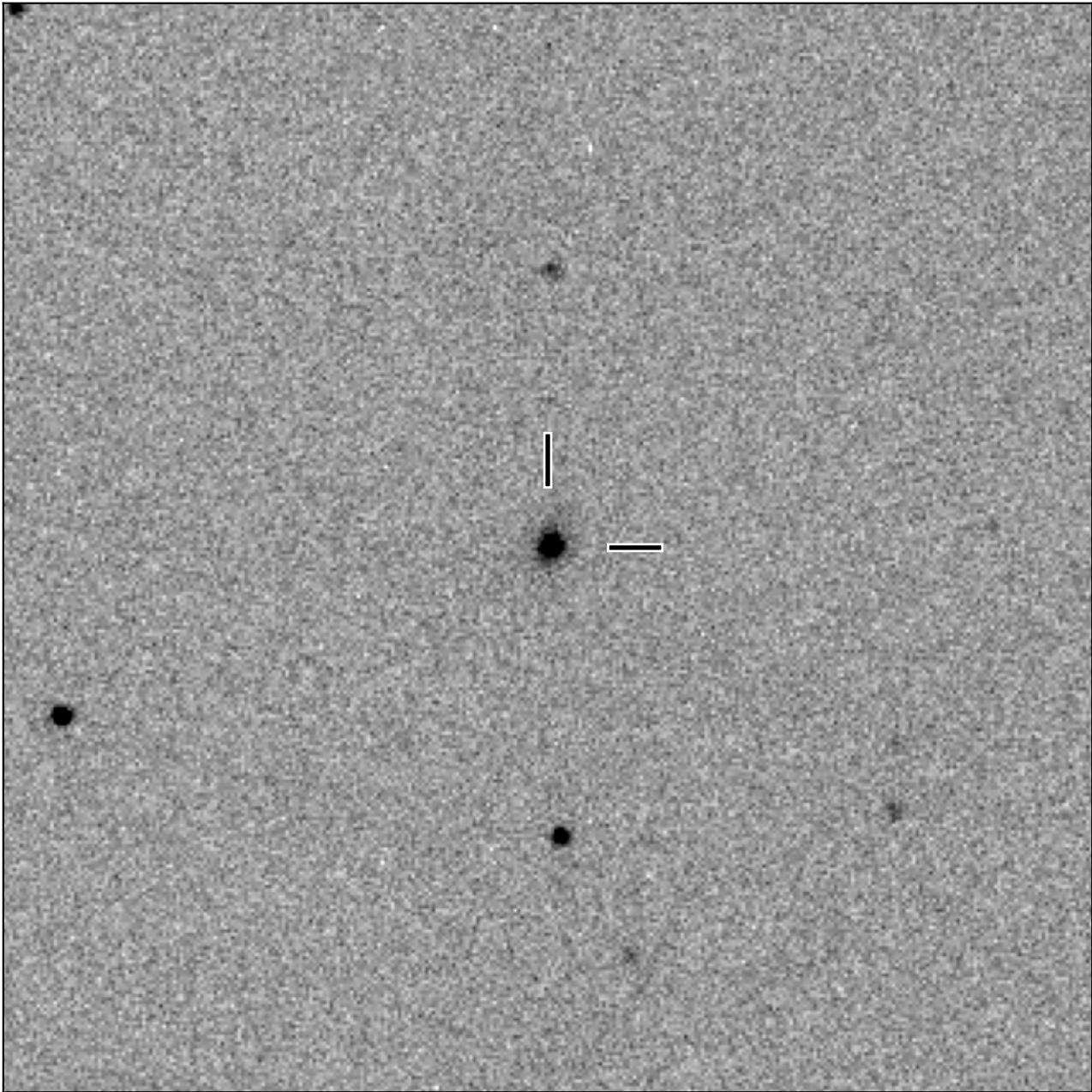


# BlackGEM-2 finding chart for BGEM J004929.03-255928.6

North

East



1'

Target: BGEM J004929.03-255928.6  
RA (ICRS): 0:49:29.04 (12.3710 deg)  
DEC (ICRS): -25:59:28.68 (-25.9913 deg)  
Image: BG2\_20240627\_075424\_red  
Filter: i  
Limiting magnitude: 19.41 ( $5\sigma$ )  
Finding chart size: 3.0x3.0 arcmin