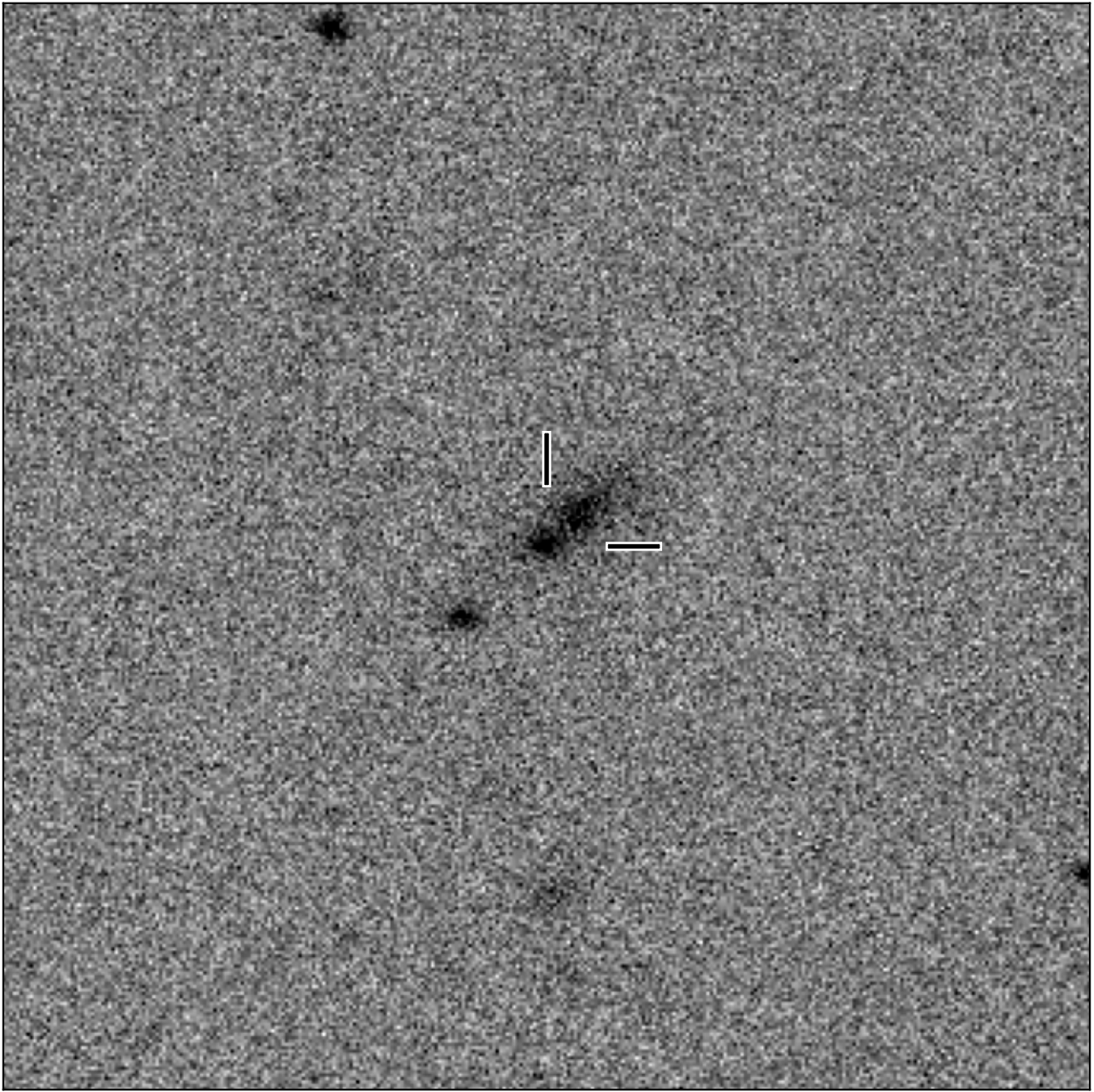


BlackGEM-2 finding chart for BGEM J103706.46-072804.9

North

East



1'

Target: BGEM J103706.46-072804.9
RA (ICRS): 10:37:06.47 (159.2770 deg)
DEC (ICRS): -7:28:04.95 (-7.4680 deg)
Image: BG2_20250225_042743_red
Filter: q
Limiting magnitude: 20.60 (5σ)
Finding chart size: 3.0x3.0 arcmin