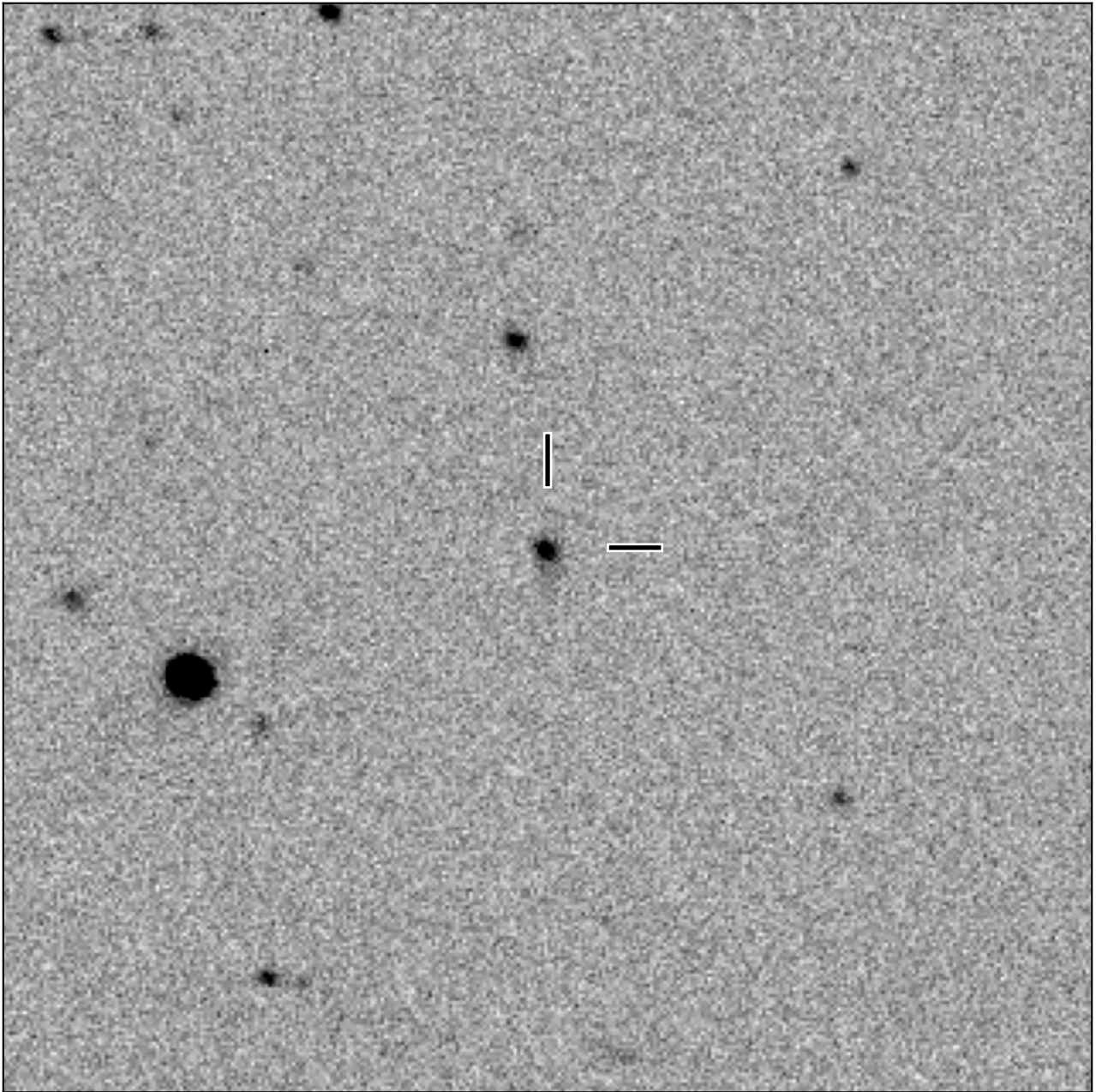


# BlackGEM-2 finding chart for BGEM J145436.11+041855.6

North

East



1'

Target: BGEM J145436.11+041855.6  
RA (ICRS): 14:54:36.12 (223.6505 deg)  
DEC (ICRS): 4:18:55.69 (4.3155 deg)  
Image: BG2\_20250110\_082004\_red  
Filter: q  
Limiting magnitude: 20.59 ( $5\sigma$ )  
Finding chart size: 3.0x3.0 arcmin