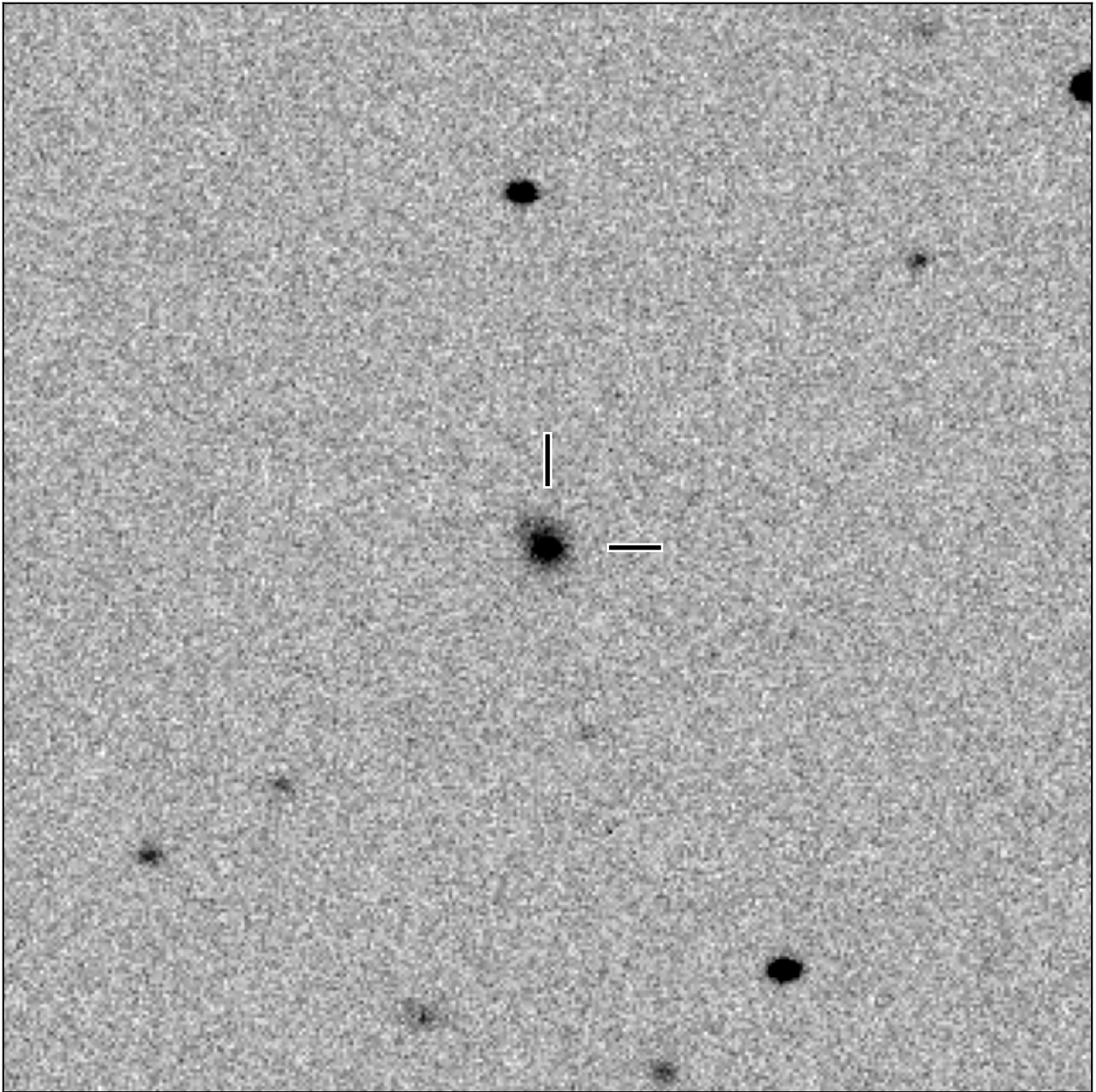


BlackGEM-2 finding chart for BGEM J033527.37-260909.8

North

East



1'

Target: BGEM J033527.37-260909.8
RA (ICRS): 3:35:27.38 (53.8641 deg)
DEC (ICRS): -26:09:09.82 (-26.1527 deg)
Image: BG2_20250702_095413_red
Filter: q
Limiting magnitude: 20.69 (5σ)
Finding chart size: 3.0x3.0 arcmin