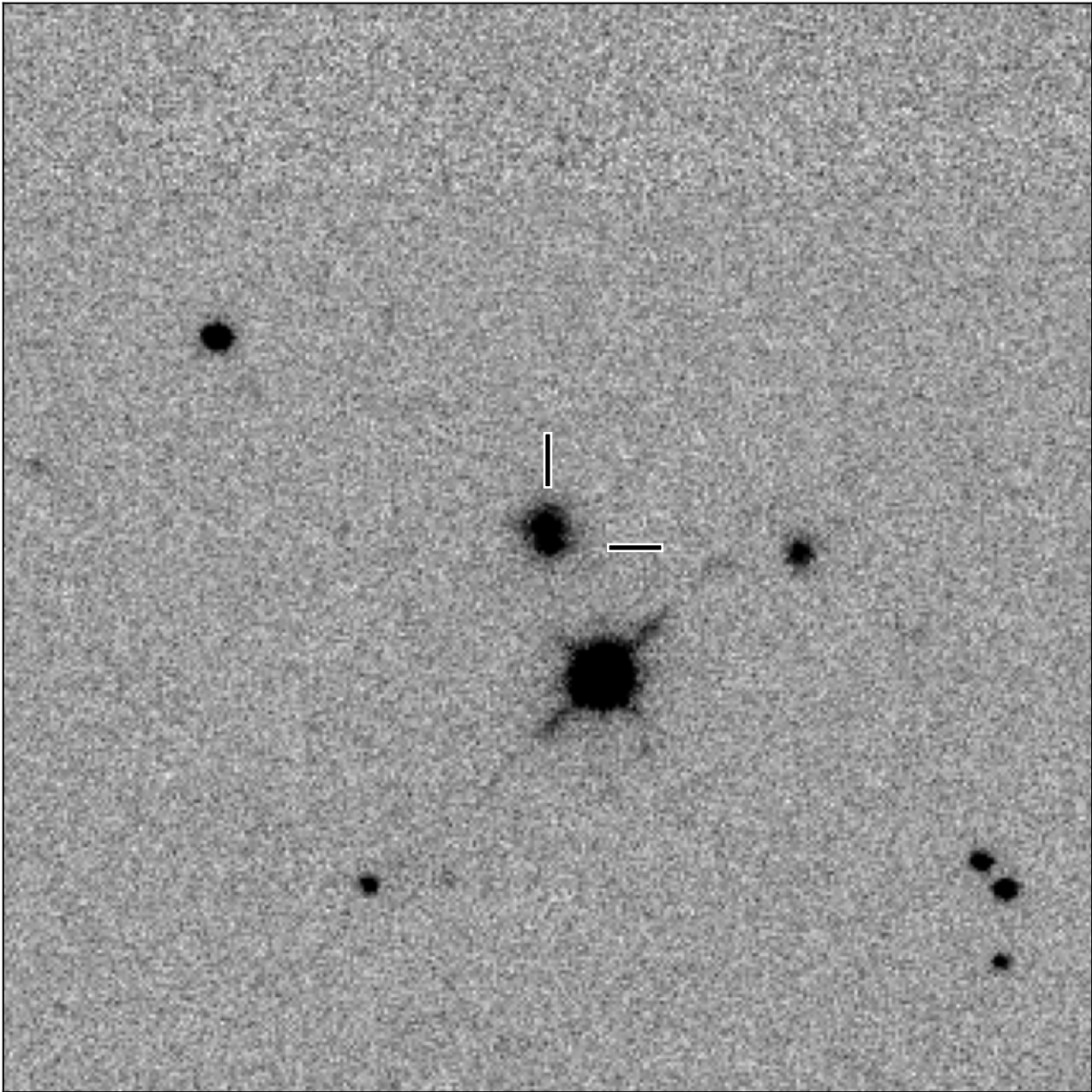


# BlackGEM-2 finding chart for BGEM J014746.20-514925.5

North

East



1'

Target: BGEM J014746.20-514925.5  
RA (ICRS): 1:47:46.20 (26.9425 deg)  
DEC (ICRS): -51:49:25.52 (-51.8238 deg)  
Image: BG2\_20251113\_030948\_red  
Filter: q  
Limiting magnitude: 20.76 ( $5\sigma$ )  
Finding chart size: 3.0x3.0 arcmin