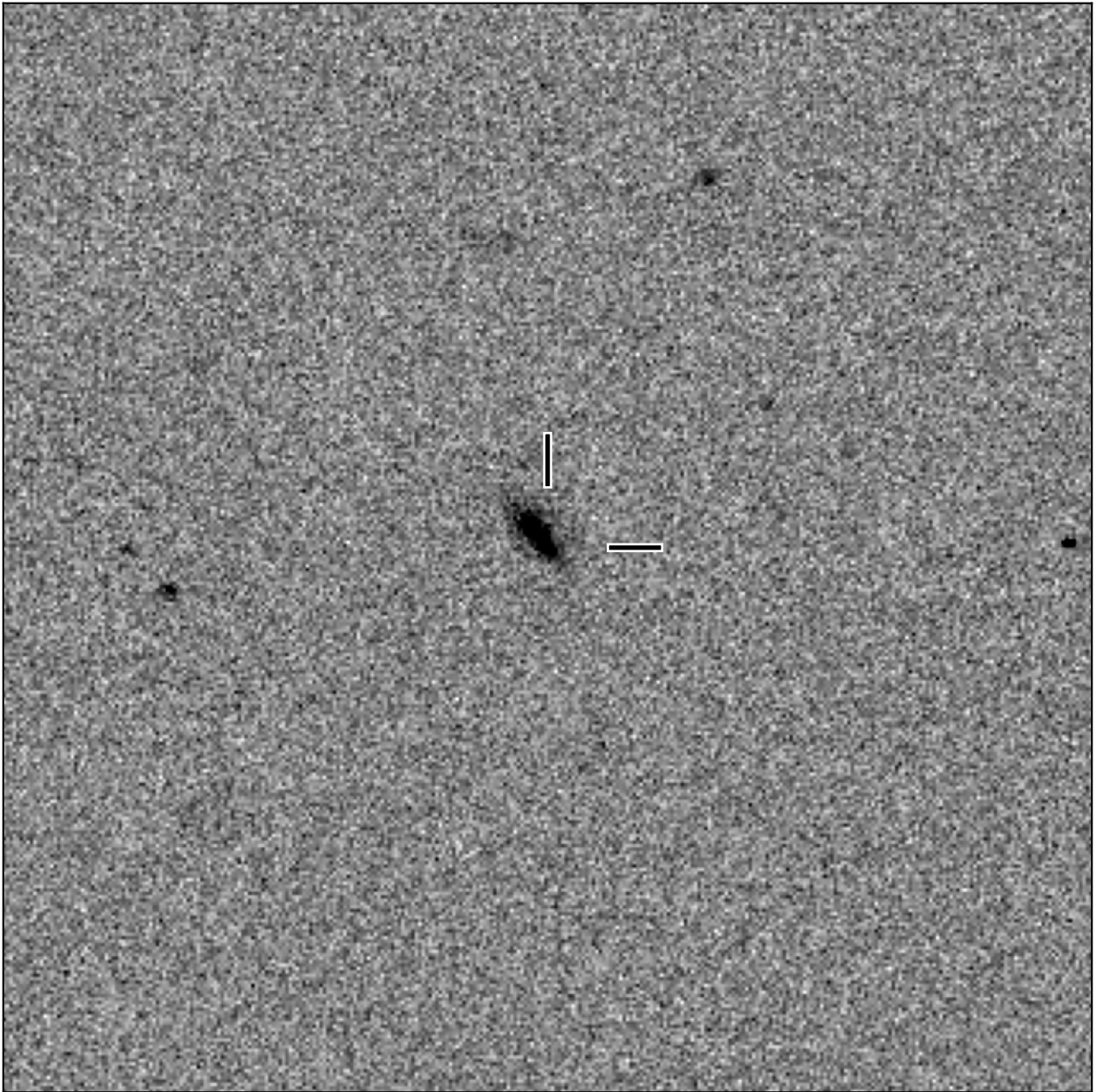


BlackGEM-2 finding chart for BGEM J110217.61+032355.6

North

East



1'

Target: BGEM J110217.61+032355.6
RA (ICRS): 11:02:17.62 (165.5734 deg)
DEC (ICRS): 3:23:55.69 (3.3988 deg)
Image: BG2_20241224_065346_red
Filter: q
Limiting magnitude: 20.41 (5σ)
Finding chart size: 3.0x3.0 arcmin