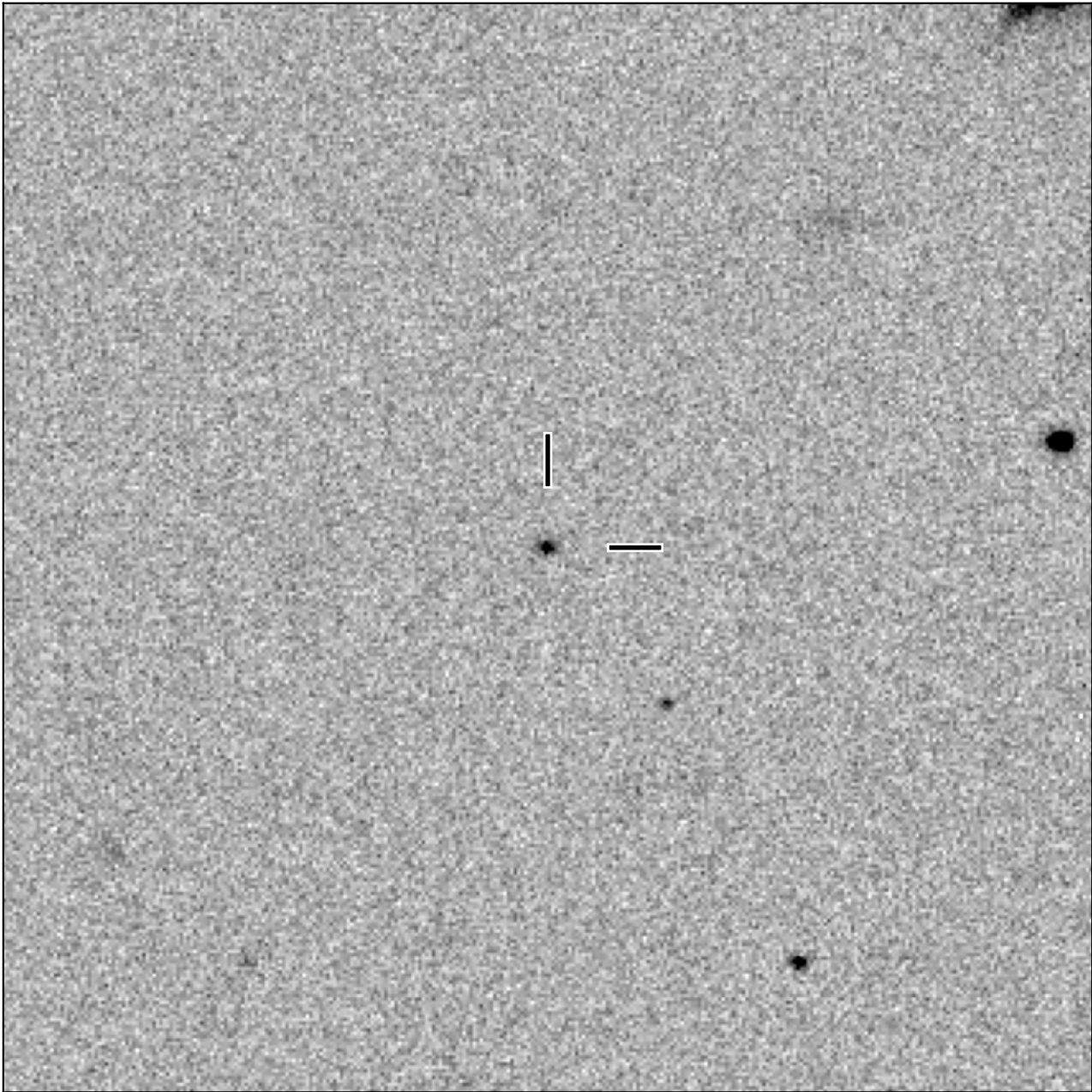


BlackGEM-2 finding chart for BGEM J025806.93-042352.3

North

East



1'

Target: BGEM J025806.93-042352.3
RA (ICRS): 2:58:06.94 (44.5289 deg)
DEC (ICRS): -4:23:52.37 (-4.3979 deg)
Image: BG2_20241231_011457_red
Filter: q
Limiting magnitude: 21.20 (5σ)
Finding chart size: 3.0x3.0 arcmin