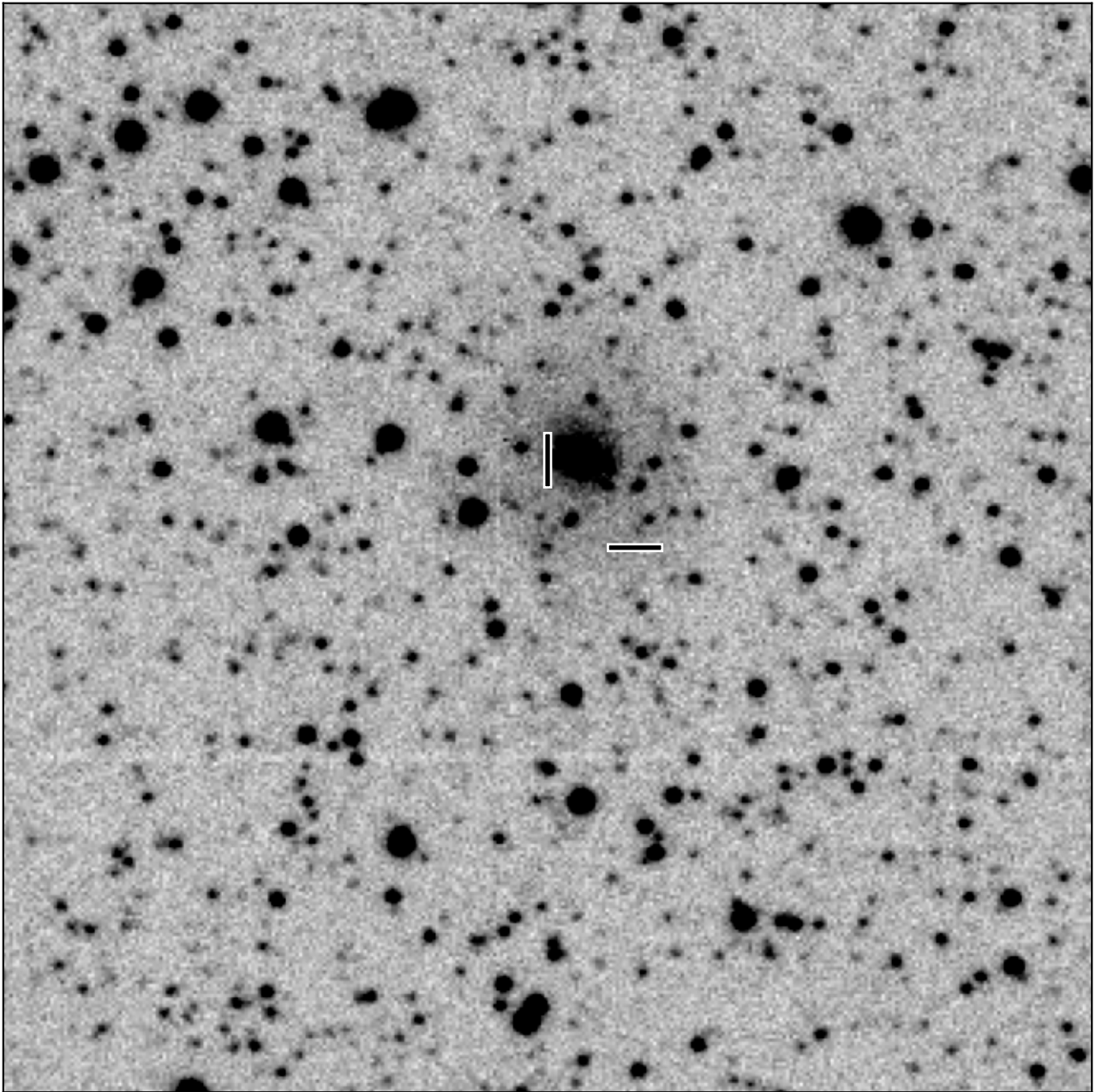


# BlackGEM-2 finding chart for BGEM J171612.09-194916.2

North

East



1'

Target: BGEM J171612.09-194916.2  
RA (ICRS): 17:16:12.09 (259.0504 deg)  
DEC (ICRS): -19:49:16.24 (-19.8212 deg)  
Image: BG2\_20240316\_092053\_red  
Filter: i  
Limiting magnitude: 20.54 ( $5\sigma$ )  
Finding chart size: 3.0x3.0 arcmin