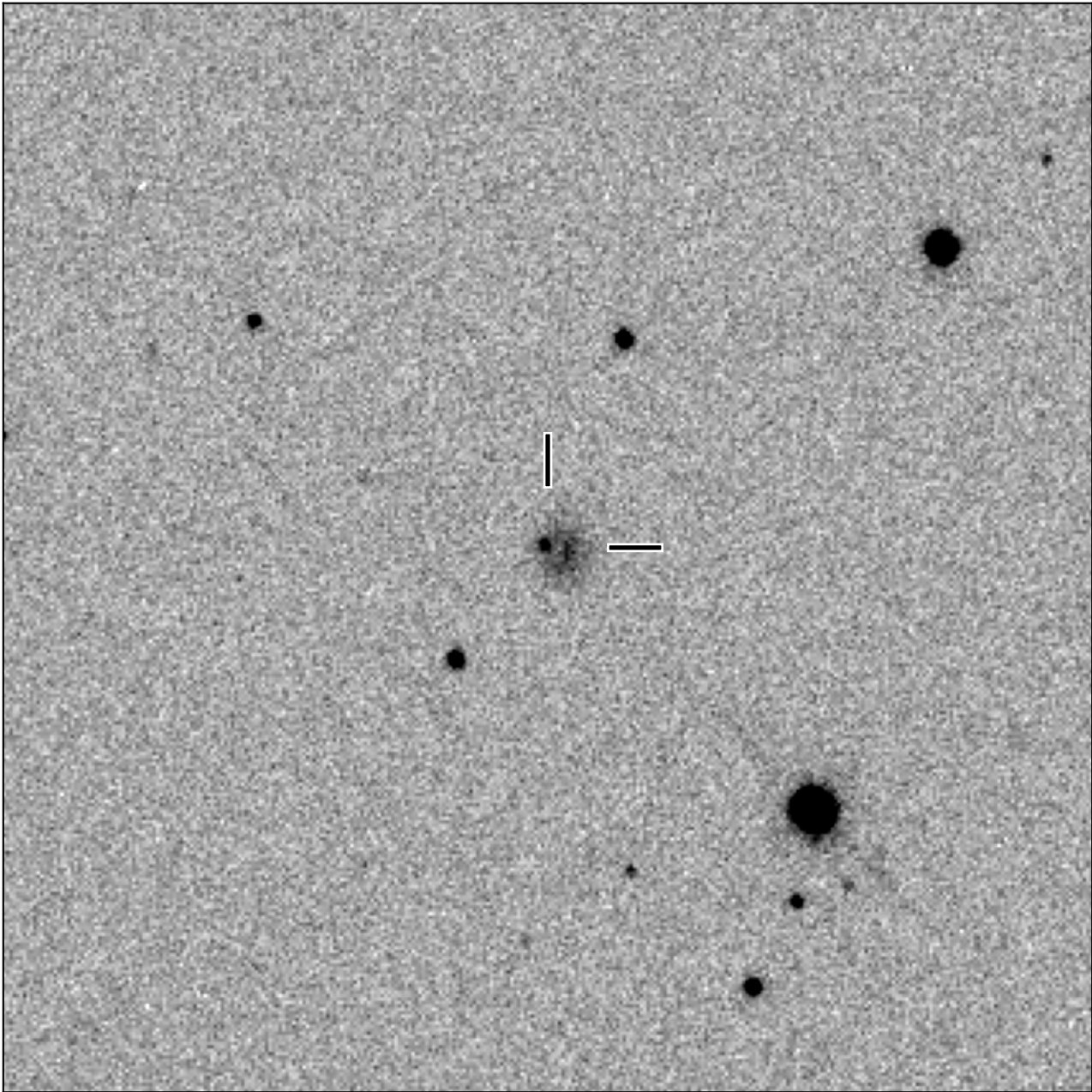


BlackGEM-4 finding chart for BGEM J124953.42-174441.7

North

East



1'

Target: BGEM J124953.42-174441.7
RA (ICRS): 12:49:53.42 (192.4726 deg)
DEC (ICRS): -17:44:41.78 (-17.7449 deg)
Image: BG4_20240417_044755_red
Filter: q
Limiting magnitude: 21.09 (5σ)
Finding chart size: 3.0x3.0 arcmin