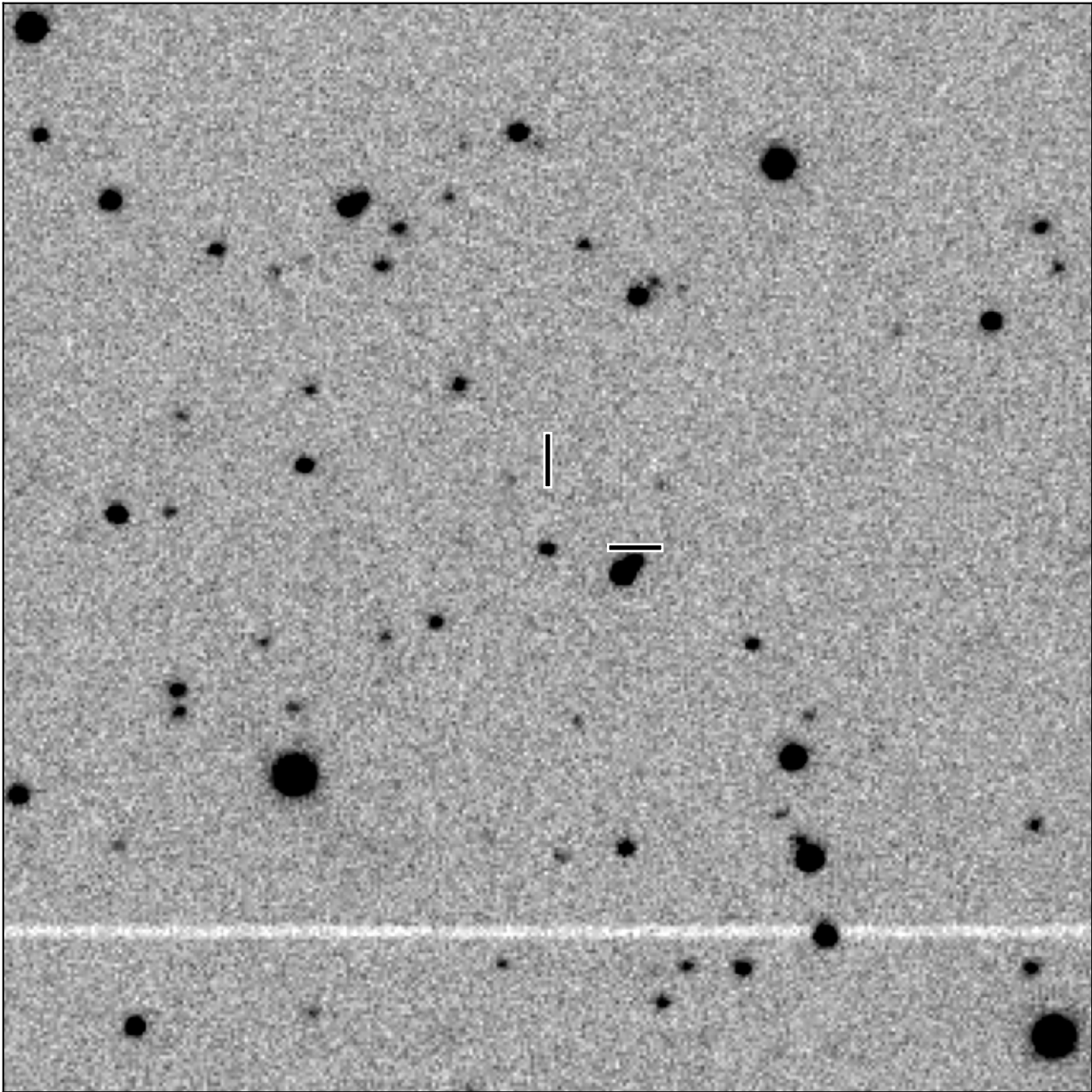


BlackGEM-2 finding chart for BGEM J081941.57-172807.4

North

East



1'

Target: BGEM J081941.57-172807.4
RA (ICRS): 8:19:41.57 (124.9232 deg)
DEC (ICRS): -17:28:07.43 (-17.4687 deg)
Image: BG2_20240425_000805_red
Filter: q
Limiting magnitude: 20.61 (5σ)
Finding chart size: 3.0x3.0 arcmin