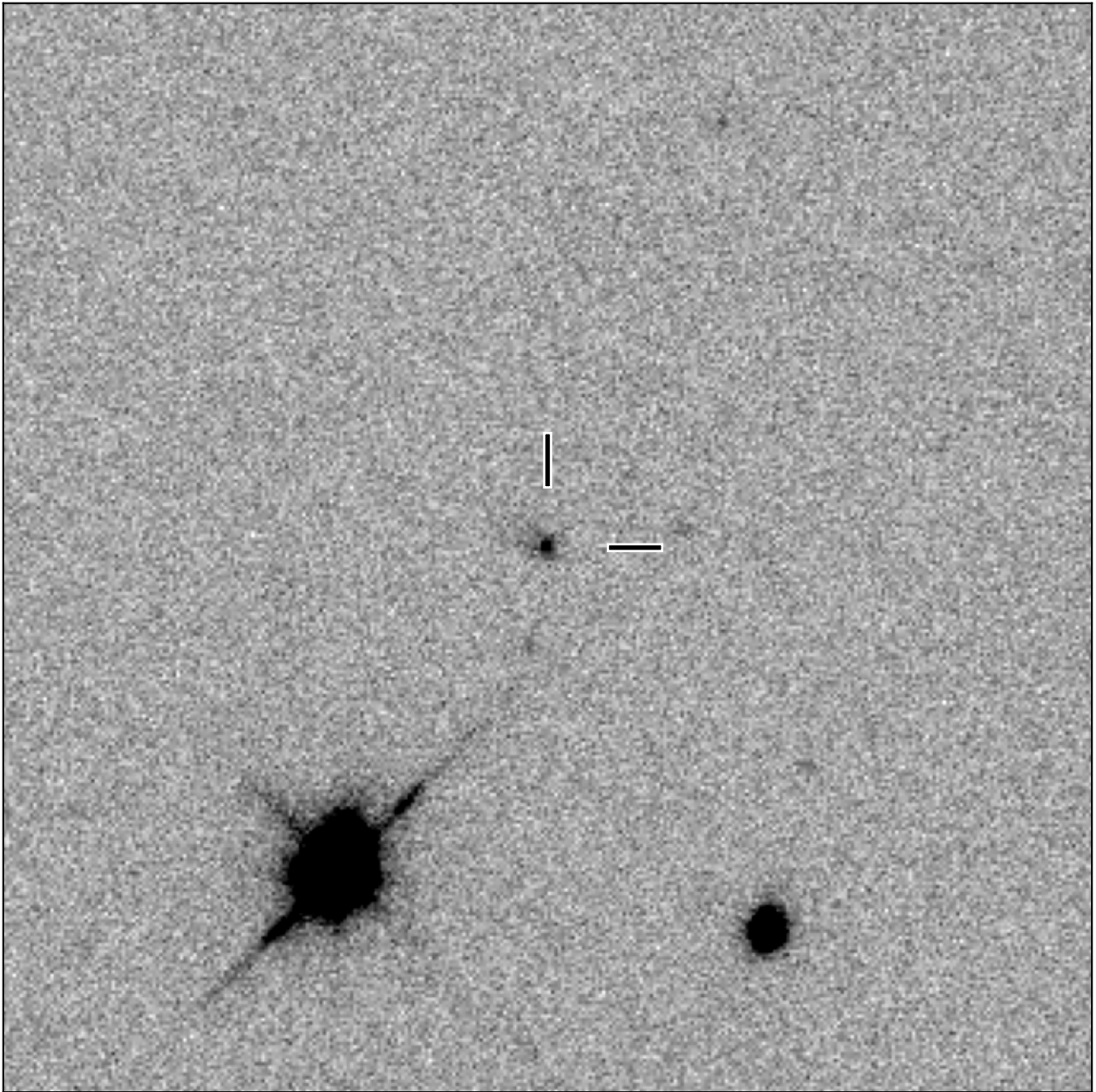


BlackGEM-4 finding chart for BGEM J114450.08+212027.0

North

East



1'

Target: BGEM J114450.08+212027.0
RA (ICRS): 11:44:50.08 (176.2087 deg)
DEC (ICRS): 21:20:27.07 (21.3409 deg)
Image: BG4_20240607_004134_red
Filter: q
Limiting magnitude: 20.65 (5σ)
Finding chart size: 3.0x3.0 arcmin