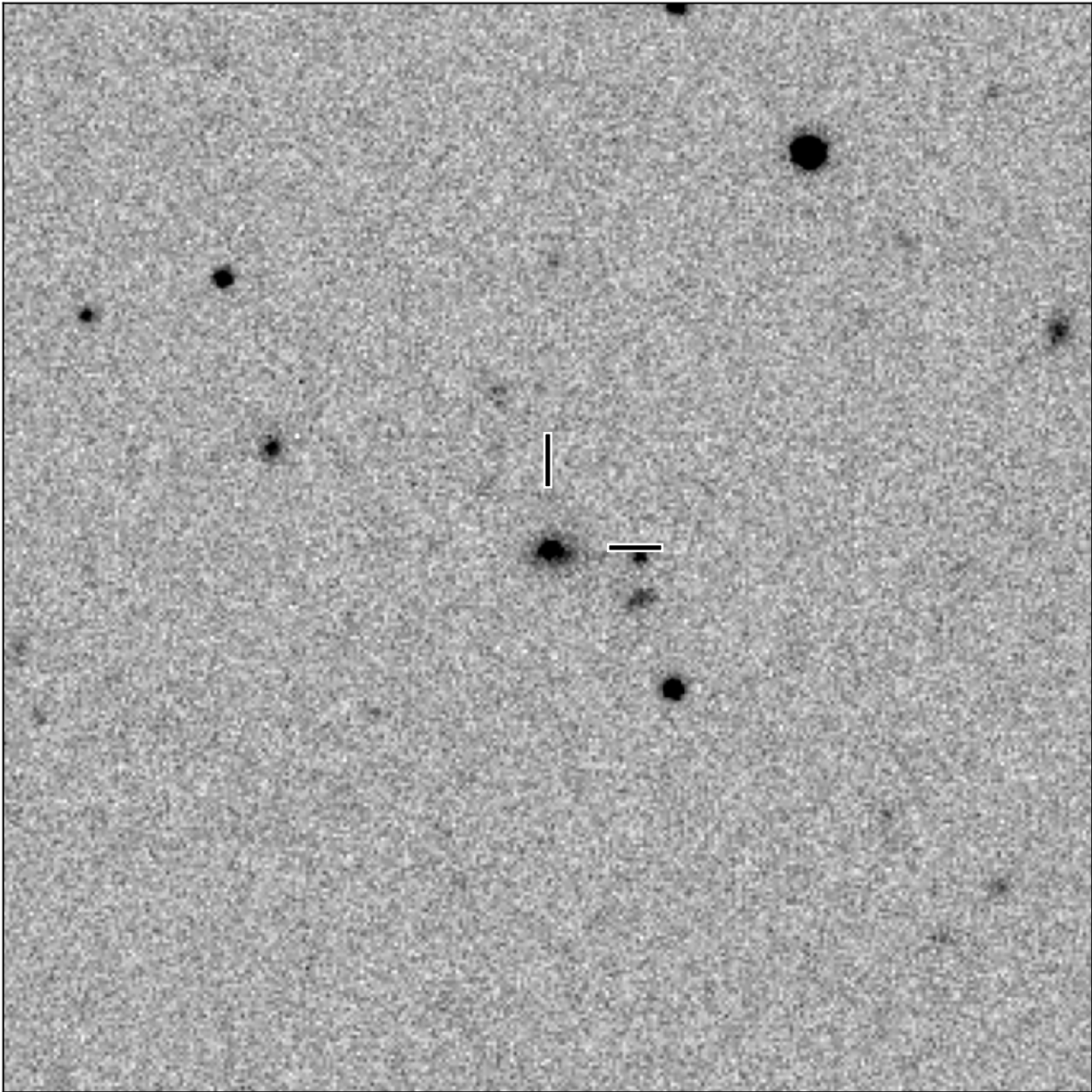


BlackGEM-2 finding chart for BGEM J144612.94+105234.2

North

East



1'

Target: BGEM J144612.94+105234.2
RA (ICRS): 14:46:12.95 (221.5539 deg)
DEC (ICRS): 10:52:34.28 (10.8762 deg)
Image: BG2_20240606_234750_red
Filter: q
Limiting magnitude: 21.00 (5σ)
Finding chart size: 3.0x3.0 arcmin