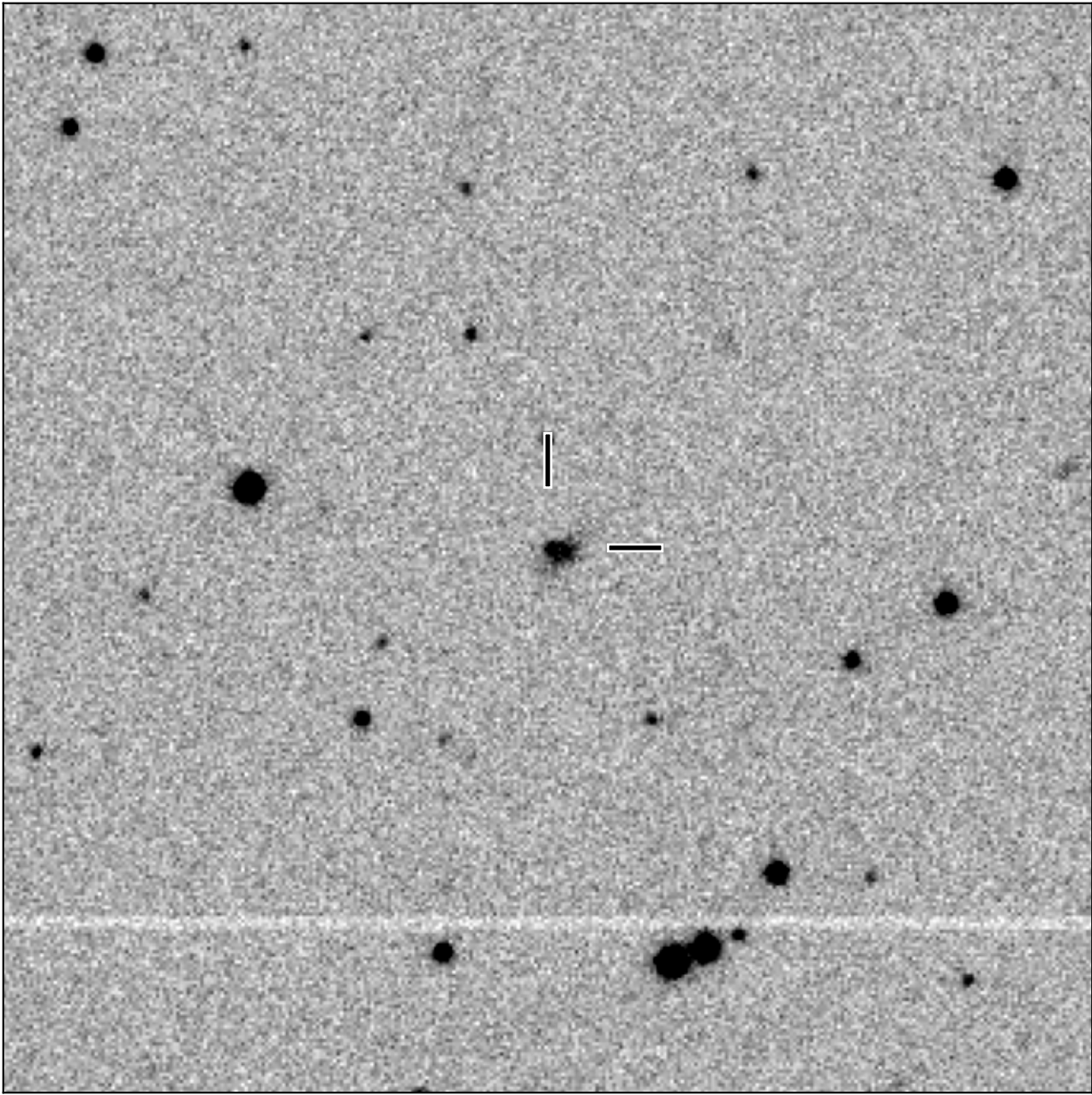


# BlackGEM-4 finding chart for BGEM J105933.81-284139.9

North

East



1'

Target: BGEM J105933.81-284139.9  
RA (ICRS): 10:59:33.82 (164.8909 deg)  
DEC (ICRS): -28:41:39.95 (-28.6944 deg)  
Image: BG4\_20240309\_041145\_red  
Filter: q  
Limiting magnitude: 21.48 ( $5\sigma$ )  
Finding chart size: 3.0x3.0 arcmin