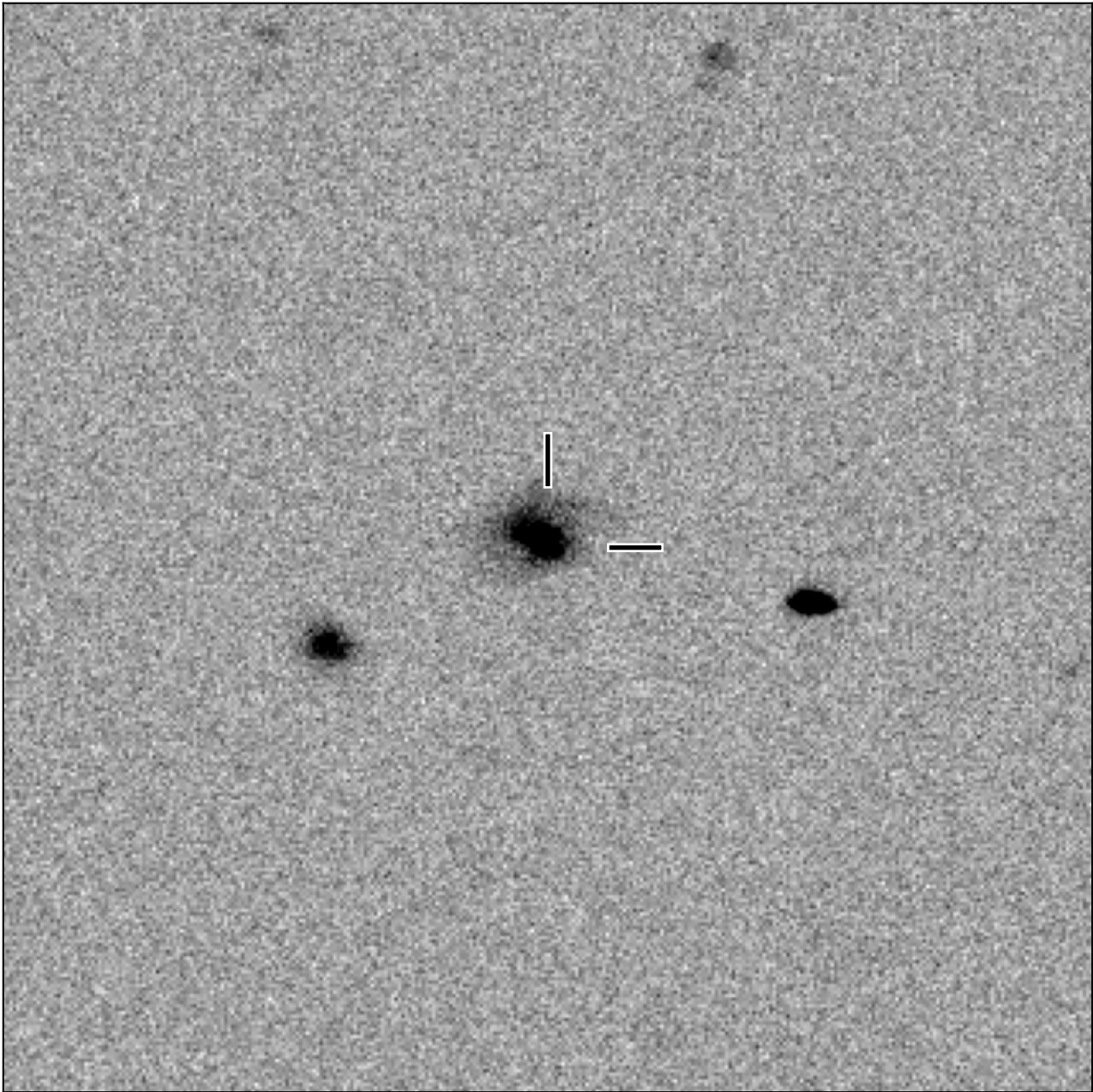


BlackGEM-2 finding chart for BGEM J013315.87-314232.7

North

East



1'

Target: BGEM J013315.87-314232.7
RA (ICRS): 1:33:15.88 (23.3162 deg)
DEC (ICRS): -31:42:32.80 (-31.7091 deg)
Image: BG2_20240608_092109_red
Filter: q
Limiting magnitude: 20.93 (5σ)
Finding chart size: 3.0x3.0 arcmin