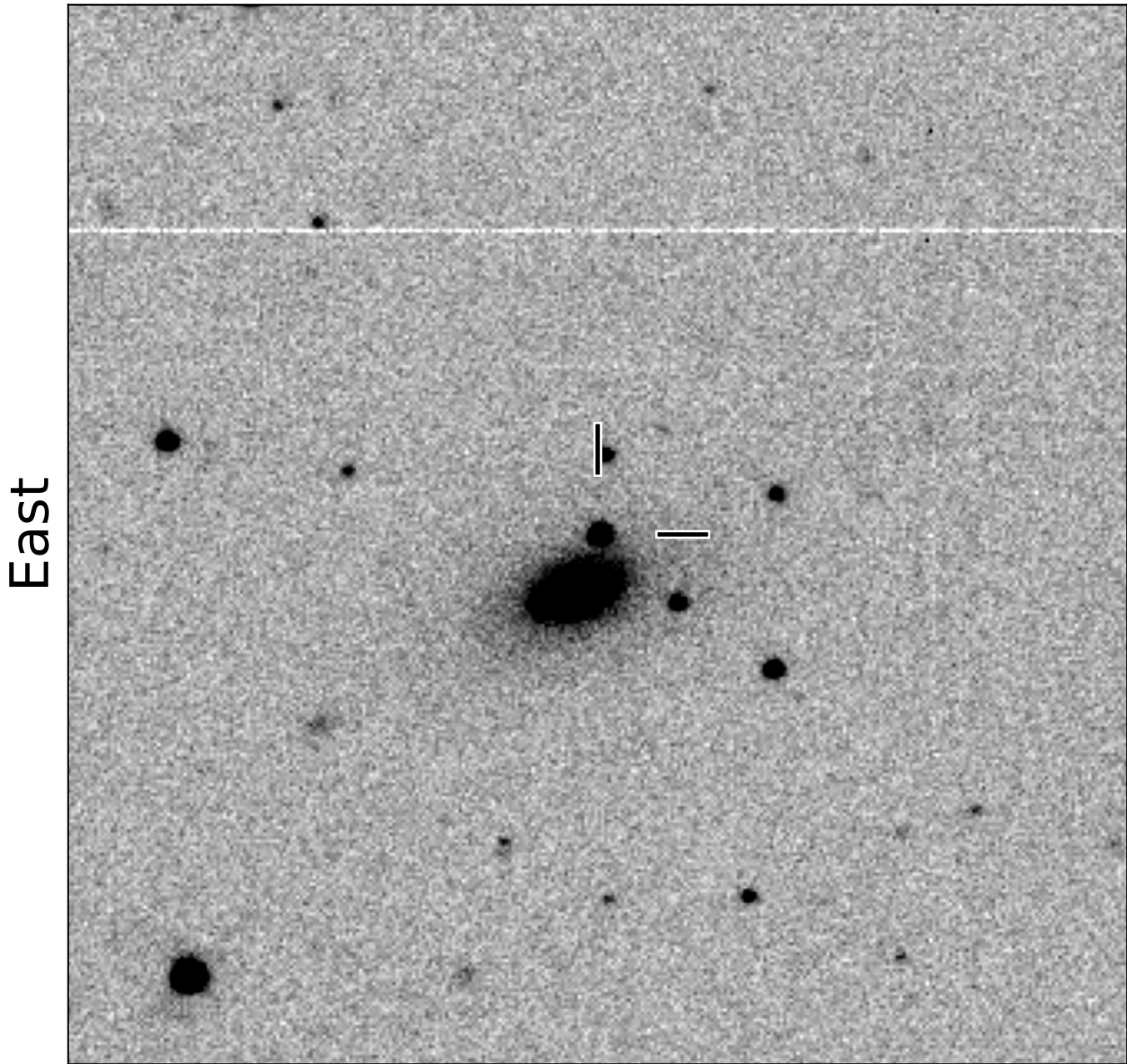


BlackGEM-2 finding chart for BGEM J205947.38-301036.0

North



East

1'

Target: BGEM J205947.38-301036.0
RA (ICRS): 20:59:47.39 (314.9474 deg)
DEC (ICRS): -30:10:36.07 (-30.1767 deg)
Image: BG2_20240630_041352_red
Filter: q
Limiting magnitude: 21.45 (5σ)
Finding chart size: 3.0x3.0 arcmin