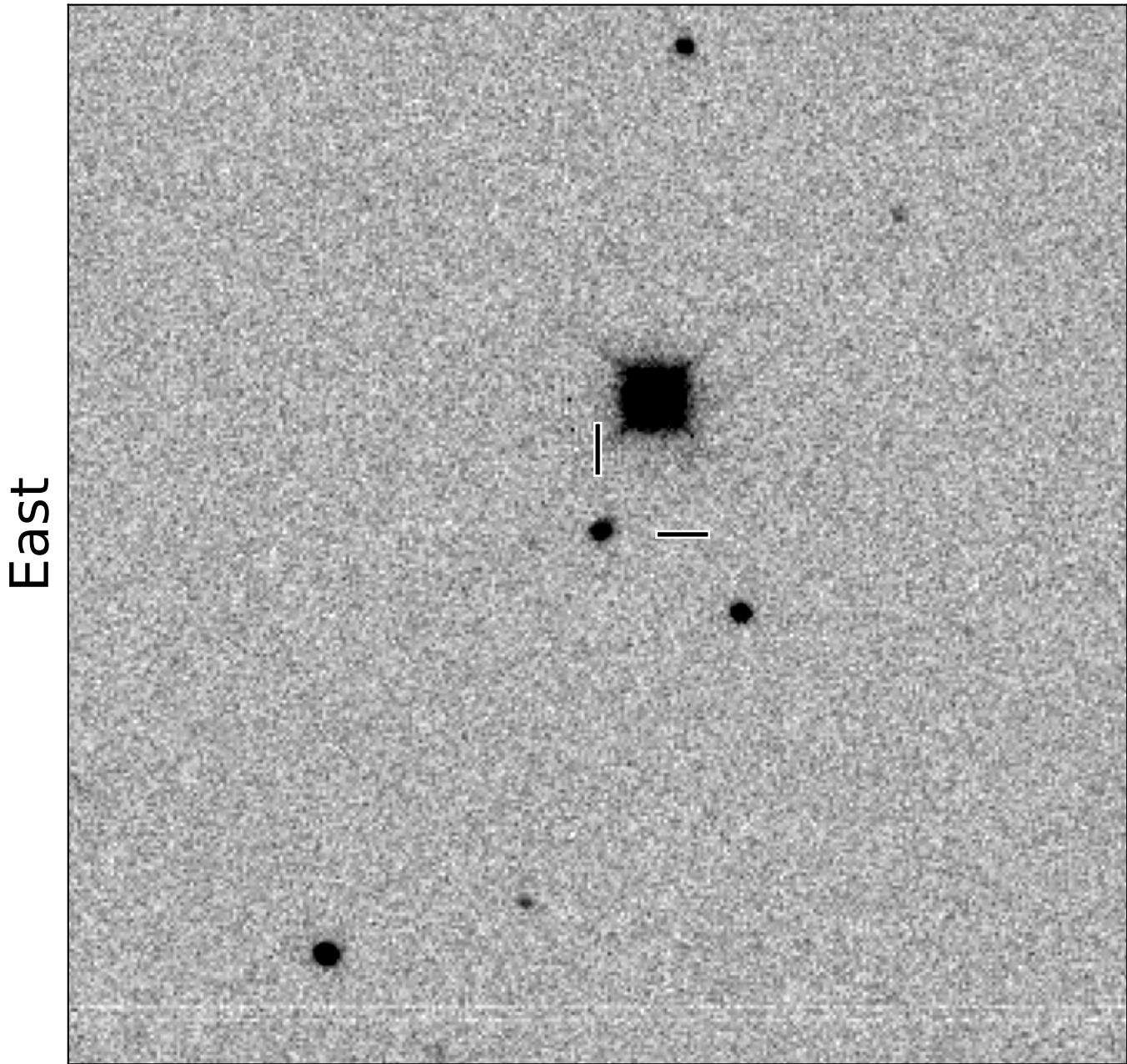


BlackGEM-2 finding chart for BGEM J023859.84-134617.0

North



East

1'

Target: BGEM J023859.84-134617.0
RA (ICRS): 2:38:59.84 (39.7493 deg)
DEC (ICRS): -13:46:17.07 (-13.7714 deg)
Image: BG2_20240717_085444_red
Filter: q
Limiting magnitude: 21.23 (5σ)
Finding chart size: 3.0x3.0 arcmin