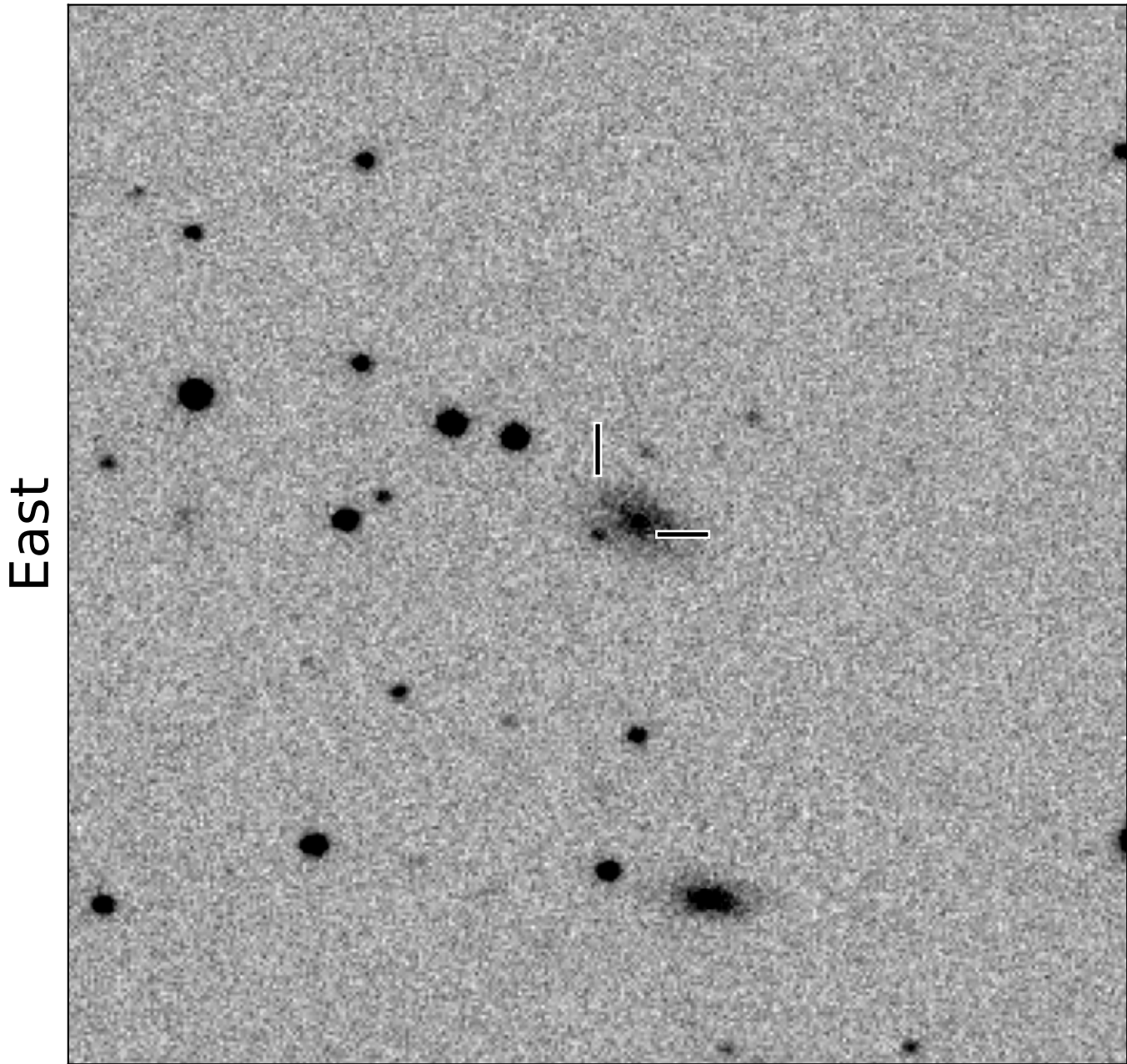


BlackGEM-4 finding chart for BGEM J100920.18-304038.6

North



1'

Target: BGEM J100920.18-304038.6
RA (ICRS): 10:09:20.18 (152.3341 deg)
DEC (ICRS): -30:40:38.63 (-30.6774 deg)
Image: BG4_20241104_083258_red
Filter: q
Limiting magnitude: 20.96 (5σ)
Finding chart size: 3.0x3.0 arcmin