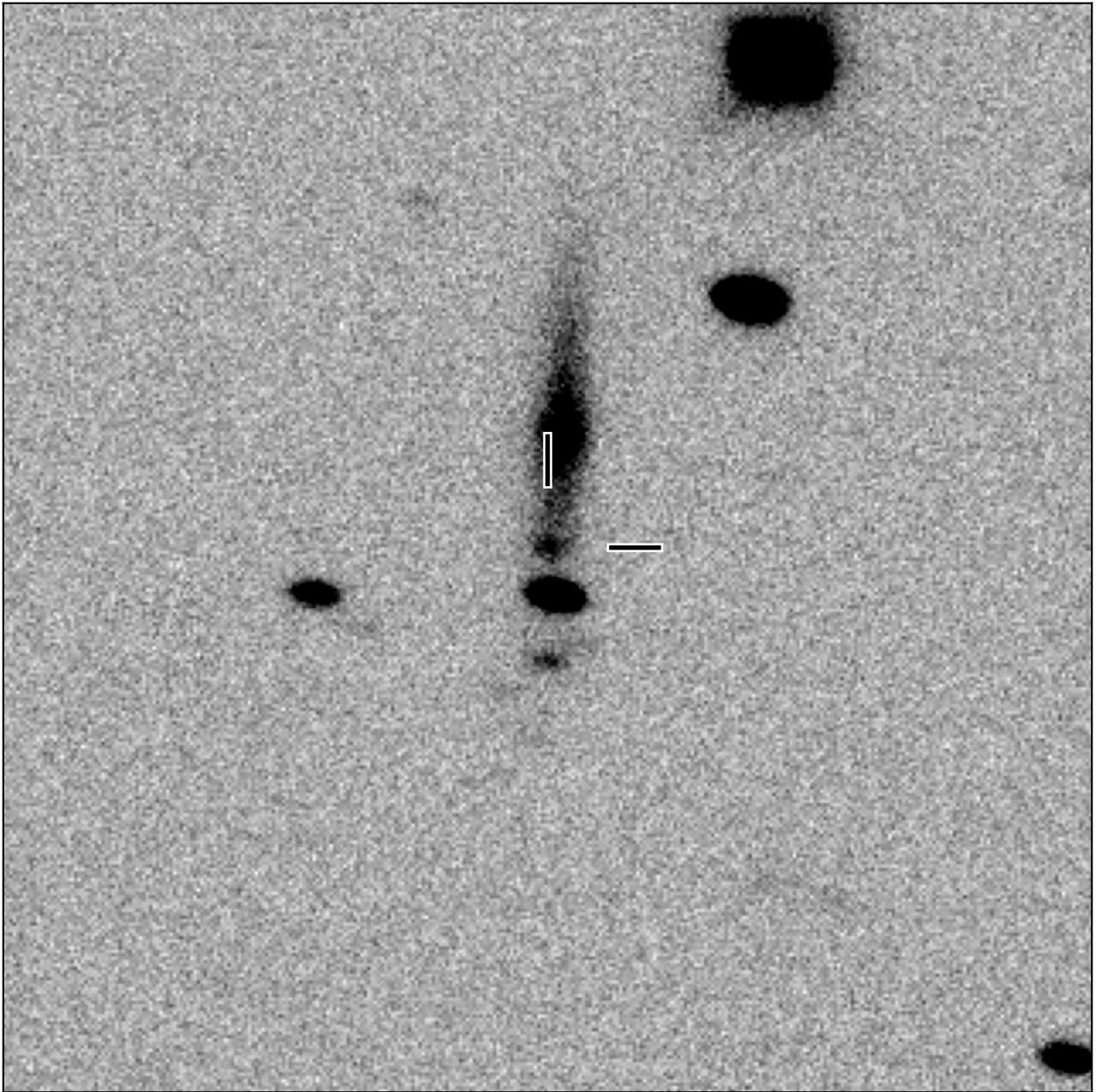


# BlackGEM-2 finding chart for BGEM J100429.66+144550.3

North

East



1'

Target: BGEM J100429.66+144550.3  
RA (ICRS): 10:04:29.67 (151.1236 deg)  
DEC (ICRS): 14:45:50.39 (14.7640 deg)  
Image: BG2\_20241203\_070603\_red  
Filter: q  
Limiting magnitude: 20.38 ( $5\sigma$ )  
Finding chart size: 3.0x3.0 arcmin