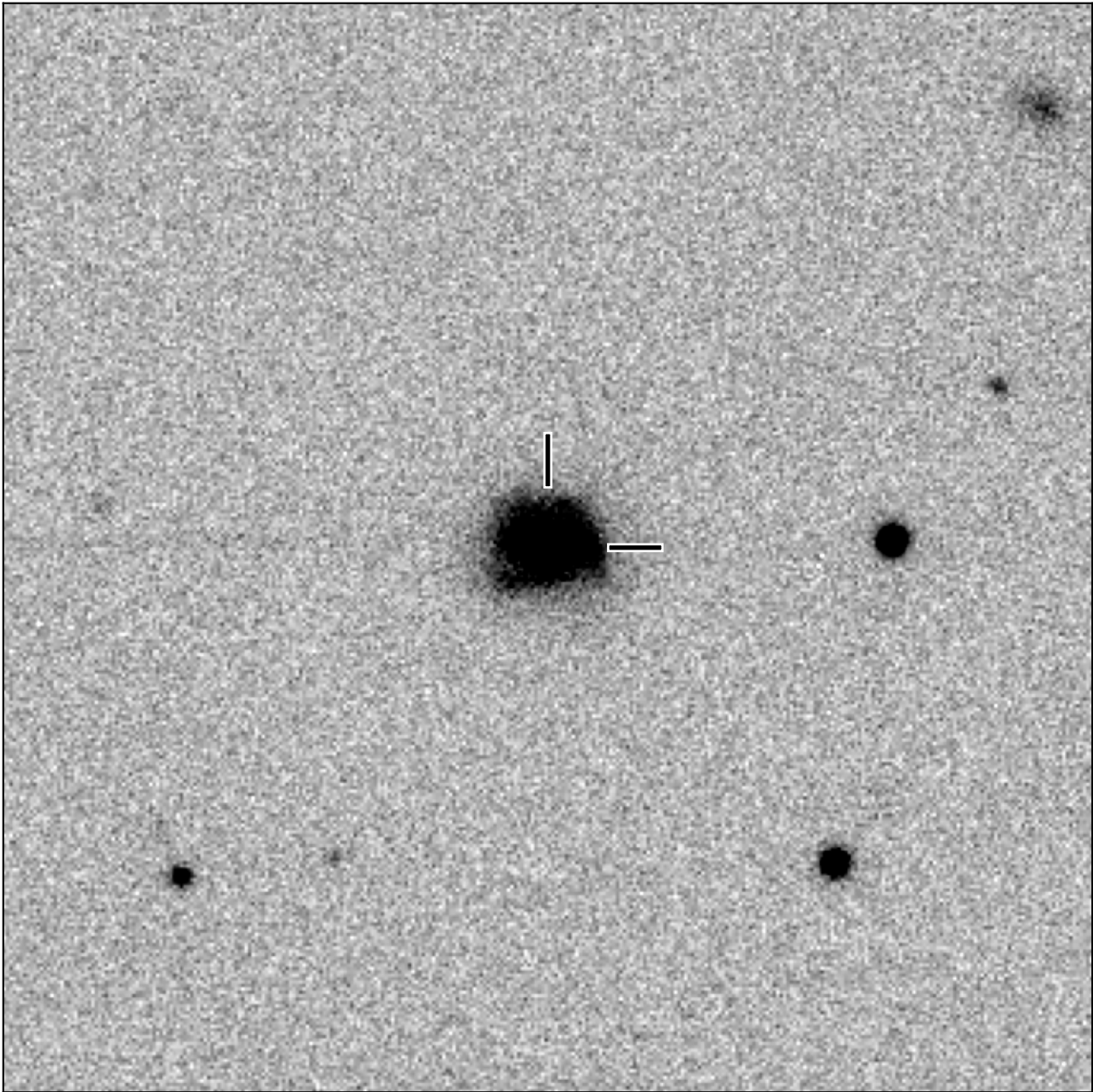


BlackGEM-4 finding chart for BGEM J020507.68+111454.7

North

East



1'

Target: BGEM J020507.68+111454.7
RA (ICRS): 2:05:07.69 (31.2820 deg)
DEC (ICRS): 11:14:54.76 (11.2485 deg)
Image: BG4_20241104_051848_red
Filter: q
Limiting magnitude: 20.88 (5σ)
Finding chart size: 3.0x3.0 arcmin