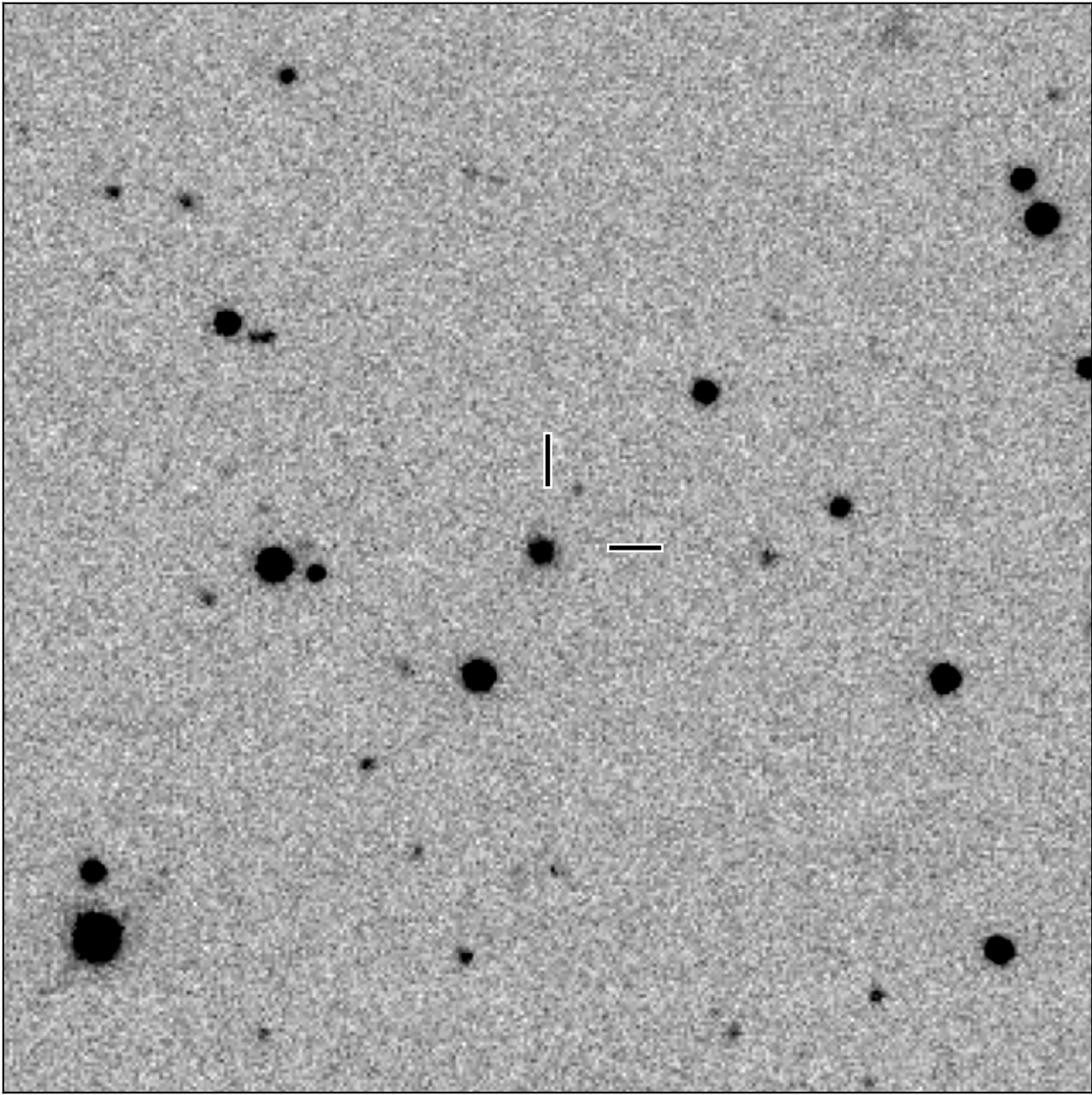


BlackGEM-2 finding chart for BGEM J134732.97-321109.7

North

East



1'

Target: BGEM J134732.97-321109.7
RA (ICRS): 13:47:32.97 (206.8874 deg)
DEC (ICRS): -32:11:09.72 (-32.1860 deg)
Image: BG2_20250108_080209_red
Filter: q
Limiting magnitude: 21.08 (5σ)
Finding chart size: 3.0x3.0 arcmin