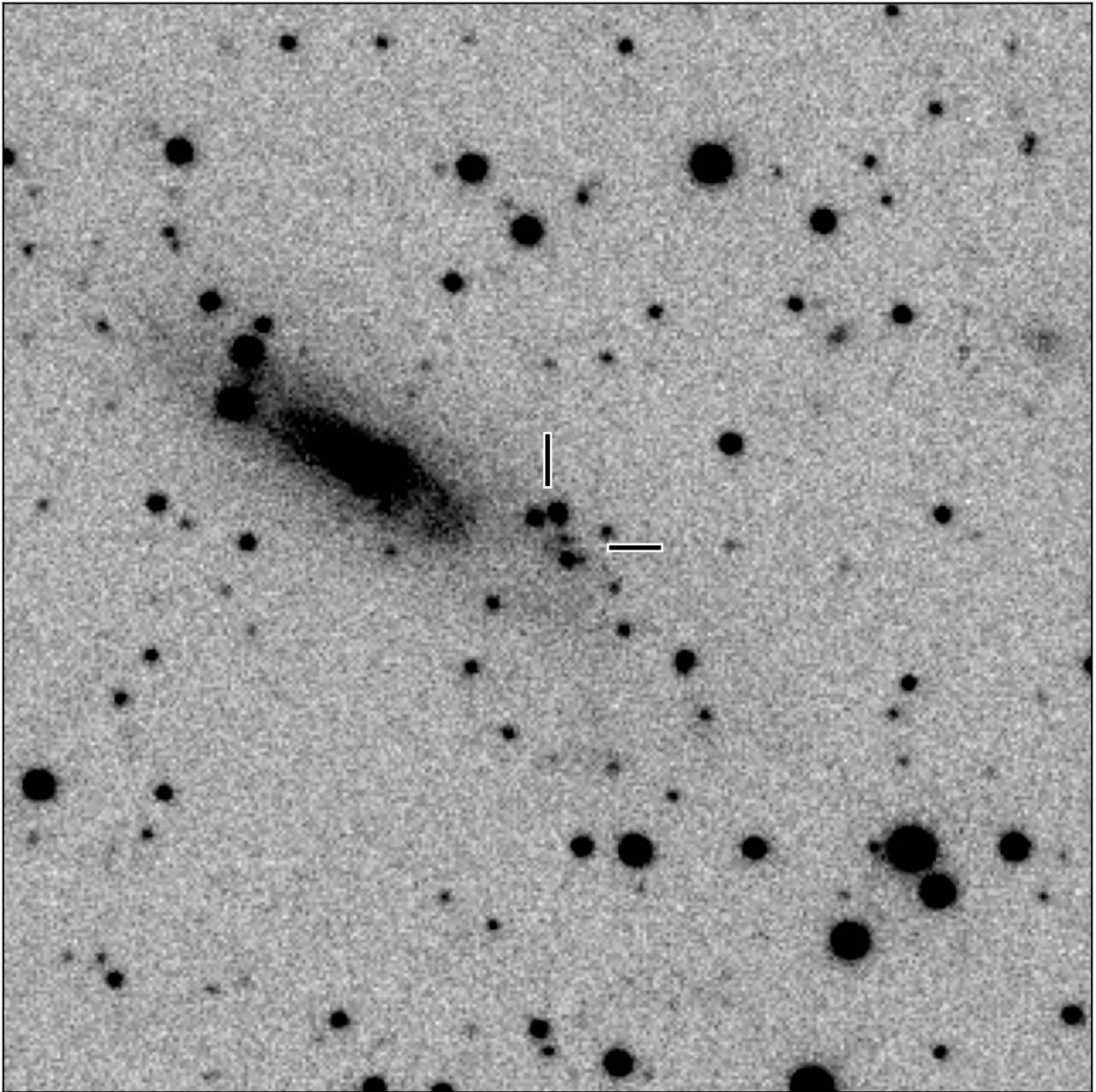


# BlackGEM-2 finding chart for BGEM J132919.68-470555.3

North

East



1'

Target: BGEM J132919.68-470555.3  
RA (ICRS): 13:29:19.69 (202.3320 deg)  
DEC (ICRS): -47:05:55.33 (-47.0987 deg)  
Image: BG2\_20250201\_081801\_red  
Filter: q  
Limiting magnitude: 21.23 ( $5\sigma$ )  
Finding chart size: 3.0x3.0 arcmin