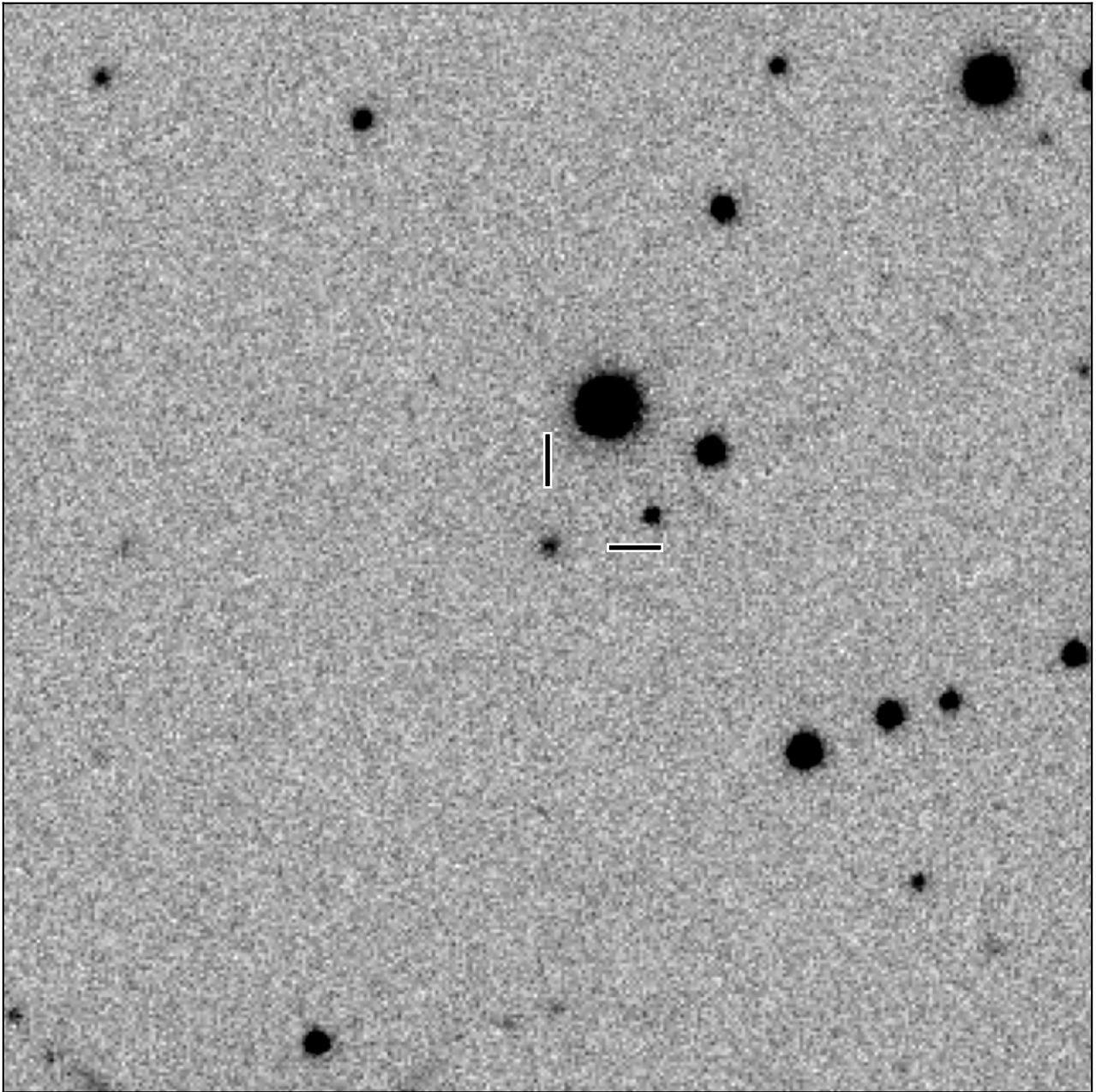


BlackGEM-4 finding chart for BGEM J075059.02+142951.3

North

East



1'

Target: BGEM J075059.02+142951.3
RA (ICRS): 7:50:59.02 (117.7459 deg)
DEC (ICRS): 14:29:51.38 (14.4976 deg)
Image: BG3_20250202_055654_red
Filter: q
Limiting magnitude: 20.83 (5σ)
Finding chart size: 3.0x3.0 arcmin