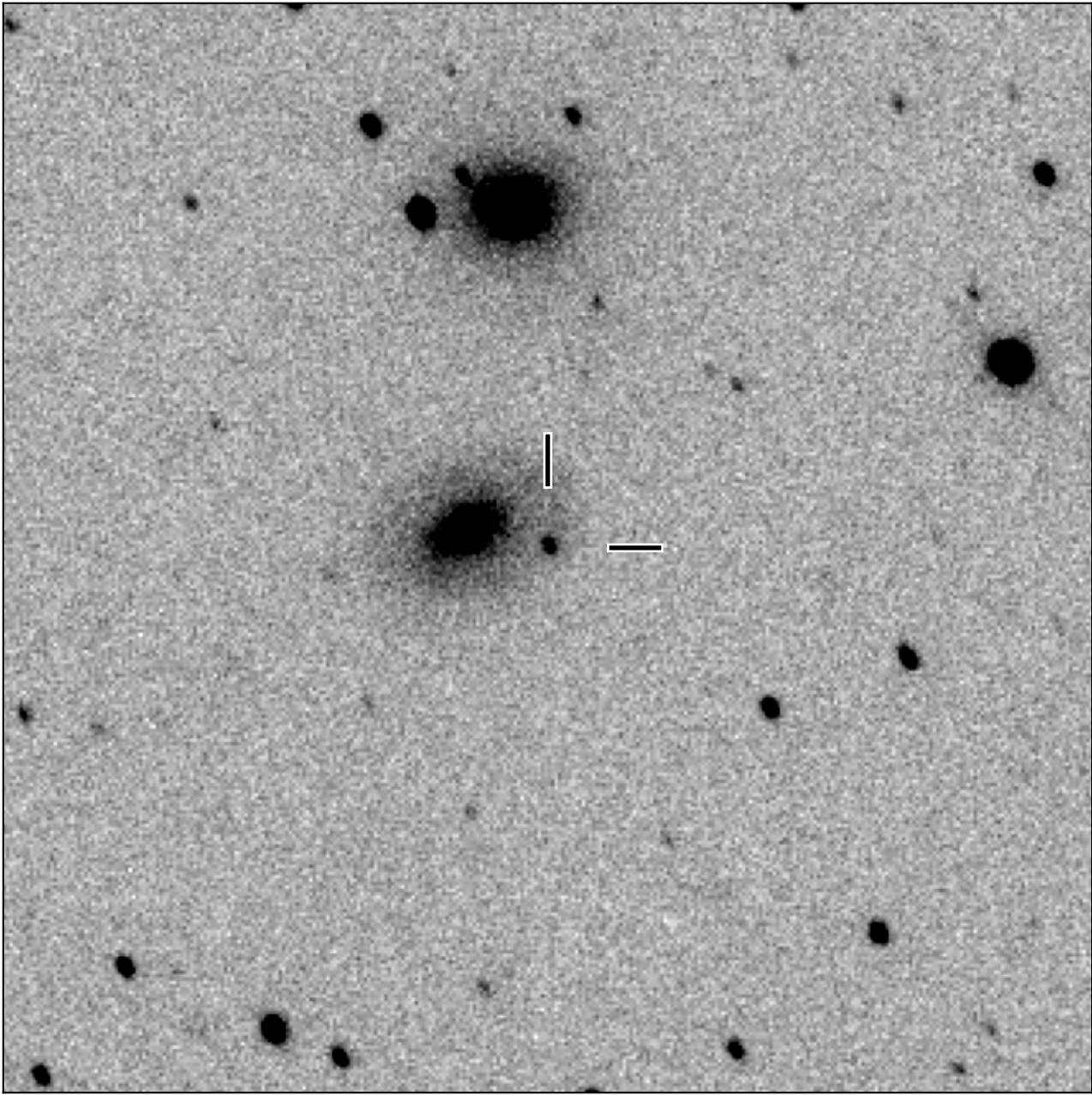


BlackGEM-4 finding chart for BGEM J162041.50-095418.9

North

East



1'

Target: BGEM J162041.50-095418.9
RA (ICRS): 16:20:41.50 (245.1729 deg)
DEC (ICRS): -9:54:18.93 (-9.9053 deg)
Image: BG4_20250304_082251_red
Filter: q
Limiting magnitude: 21.18 (5σ)
Finding chart size: 3.0x3.0 arcmin