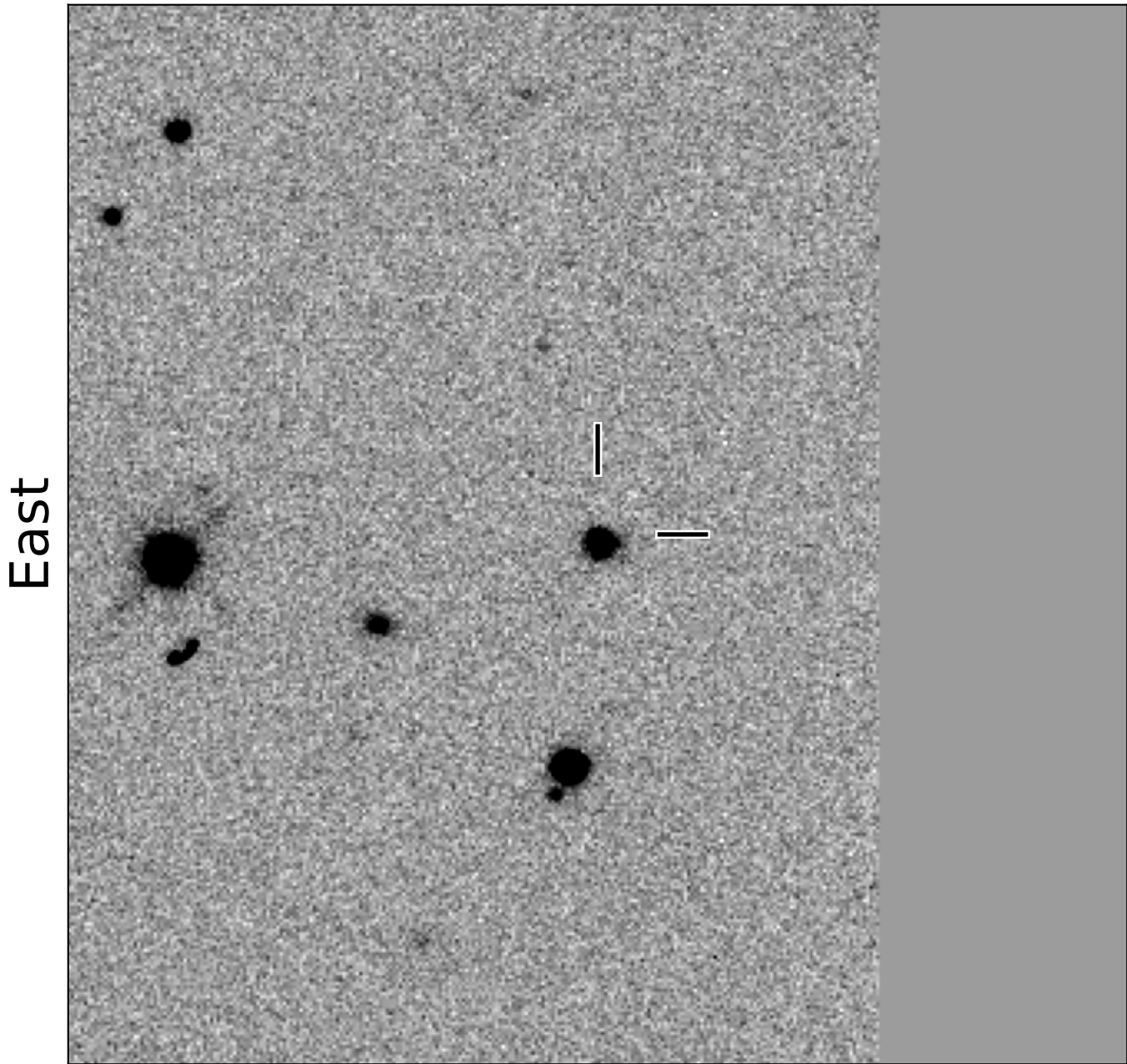


BlackGEM-2 finding chart for BGEM J152652.15+101748.9

North



East

1'

Target: BGEM J152652.15+101748.9
RA (ICRS): 15:26:52.16 (231.7173 deg)
DEC (ICRS): 10:17:48.96 (10.2969 deg)
Image: BG2_20250311_083924_red
Filter: q
Limiting magnitude: 21.17 (5σ)
Finding chart size: 3.0x3.0 arcmin