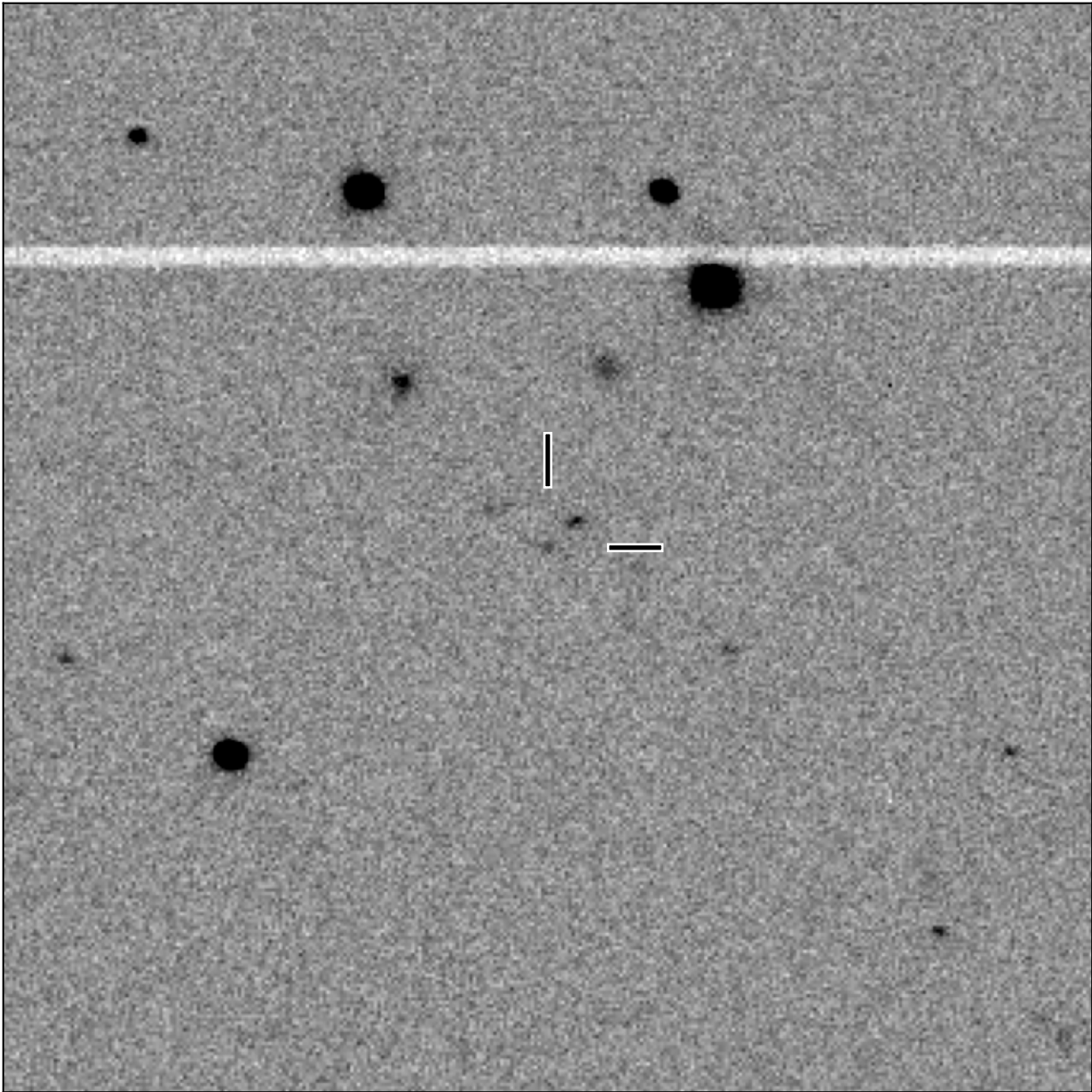


# BlackGEM-2 finding chart for BGEM J103642.02-255156.1

North

East



1'

Target: BGEM J103642.02-255156.1  
RA (ICRS): 10:36:42.02 (159.1751 deg)  
DEC (ICRS): -25:51:56.18 (-25.8656 deg)  
Image: BG2\_20250106\_061049\_red  
Filter: q  
Limiting magnitude: 21.13 ( $5\sigma$ )  
Finding chart size: 3.0x3.0 arcmin