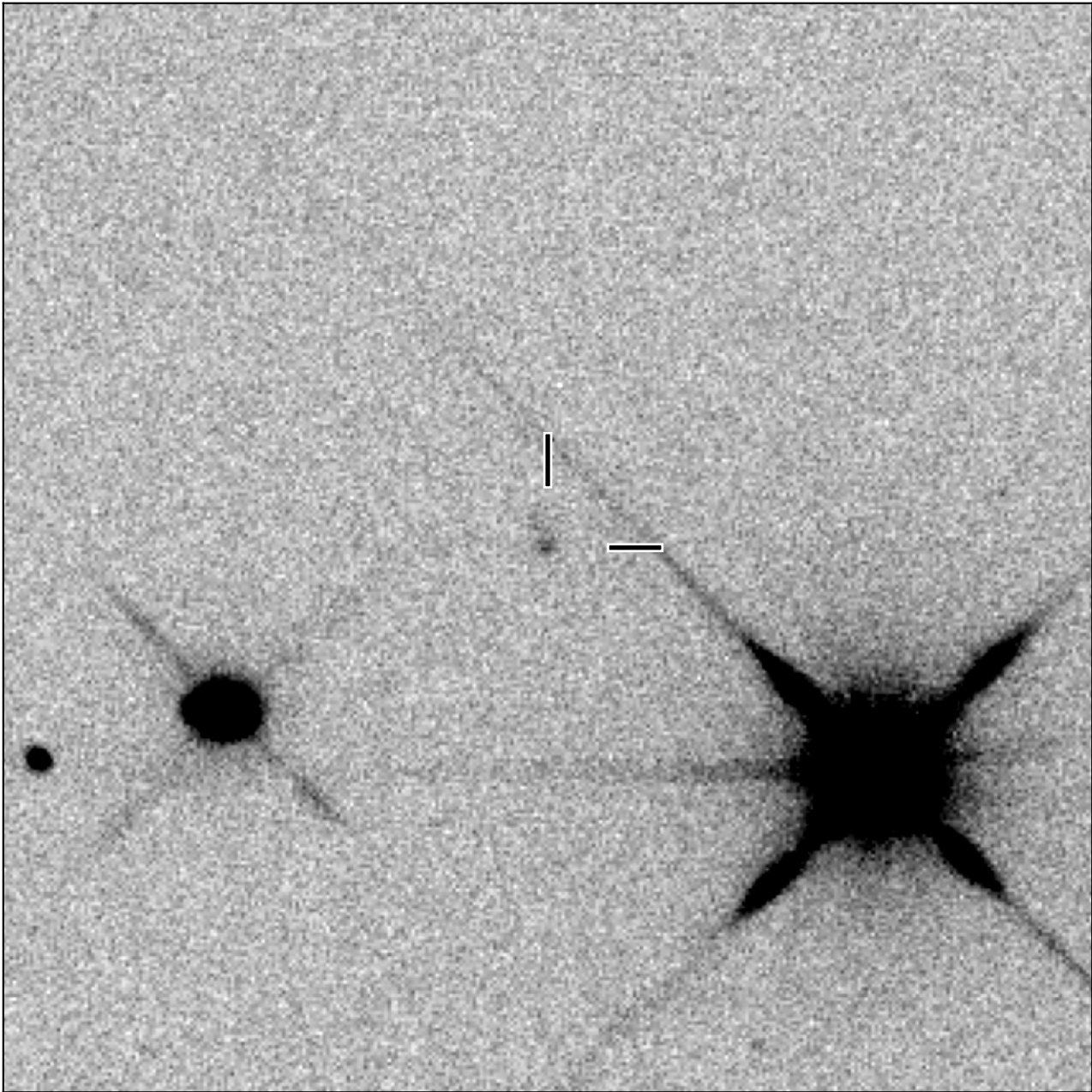


BlackGEM-4 finding chart for BGEM J102432.84-042643.1

North

East



1'

Target: BGEM J102432.84-042643.1
RA (ICRS): 10:24:32.84 (156.1368 deg)
DEC (ICRS): -4:26:43.12 (-4.4453 deg)
Image: BG3_20250107_054329_red
Filter: q
Limiting magnitude: 20.96 (5σ)
Finding chart size: 3.0x3.0 arcmin