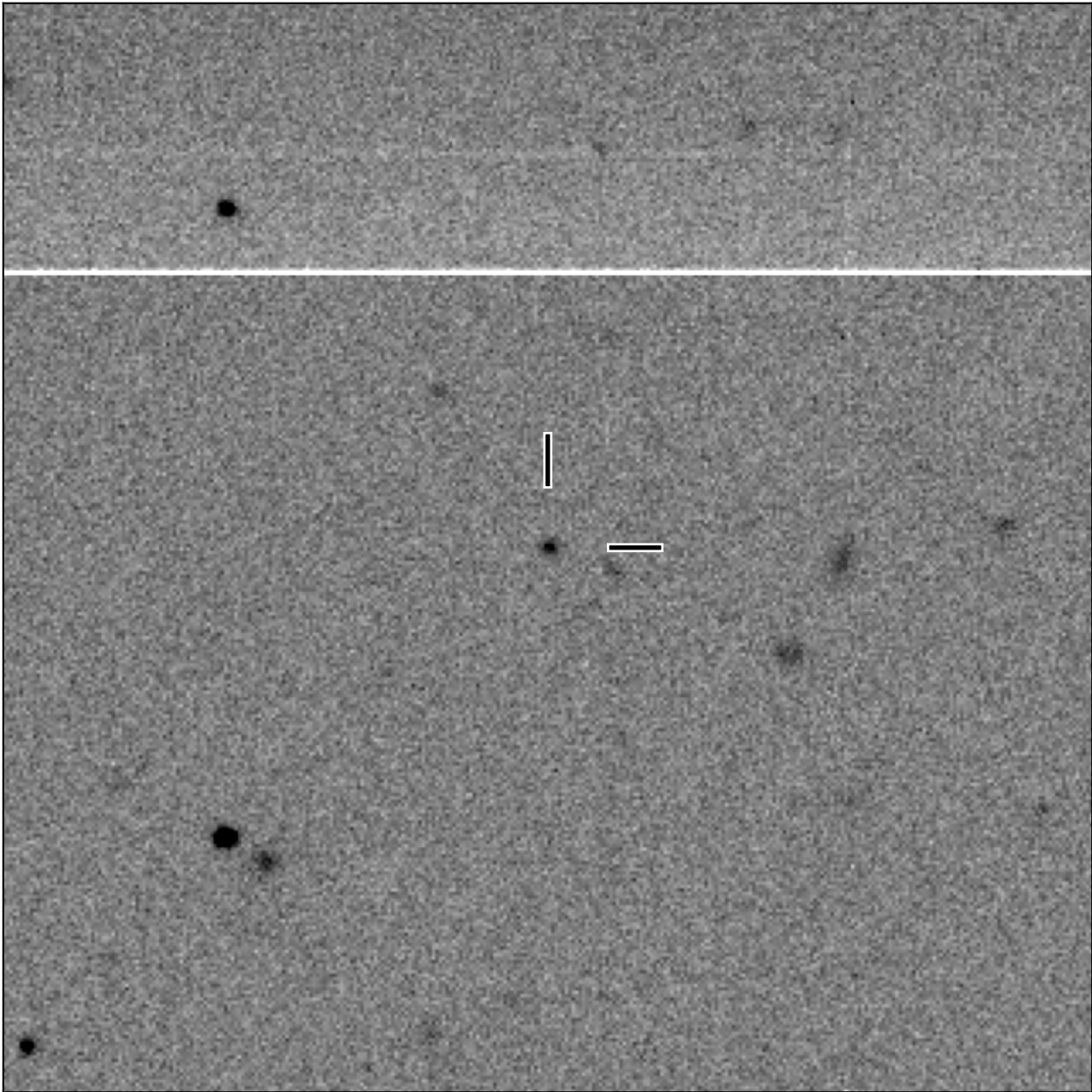


BlackGEM-2 finding chart for BGEM J111909.56+122907.1

North

East



1'

Target: BGEM J111909.56+122907.1
RA (ICRS): 11:19:09.56 (169.7899 deg)
DEC (ICRS): 12:29:07.14 (12.4853 deg)
Image: BG2_20250109_054203_red
Filter: q
Limiting magnitude: 20.75 (5σ)
Finding chart size: 3.0x3.0 arcmin