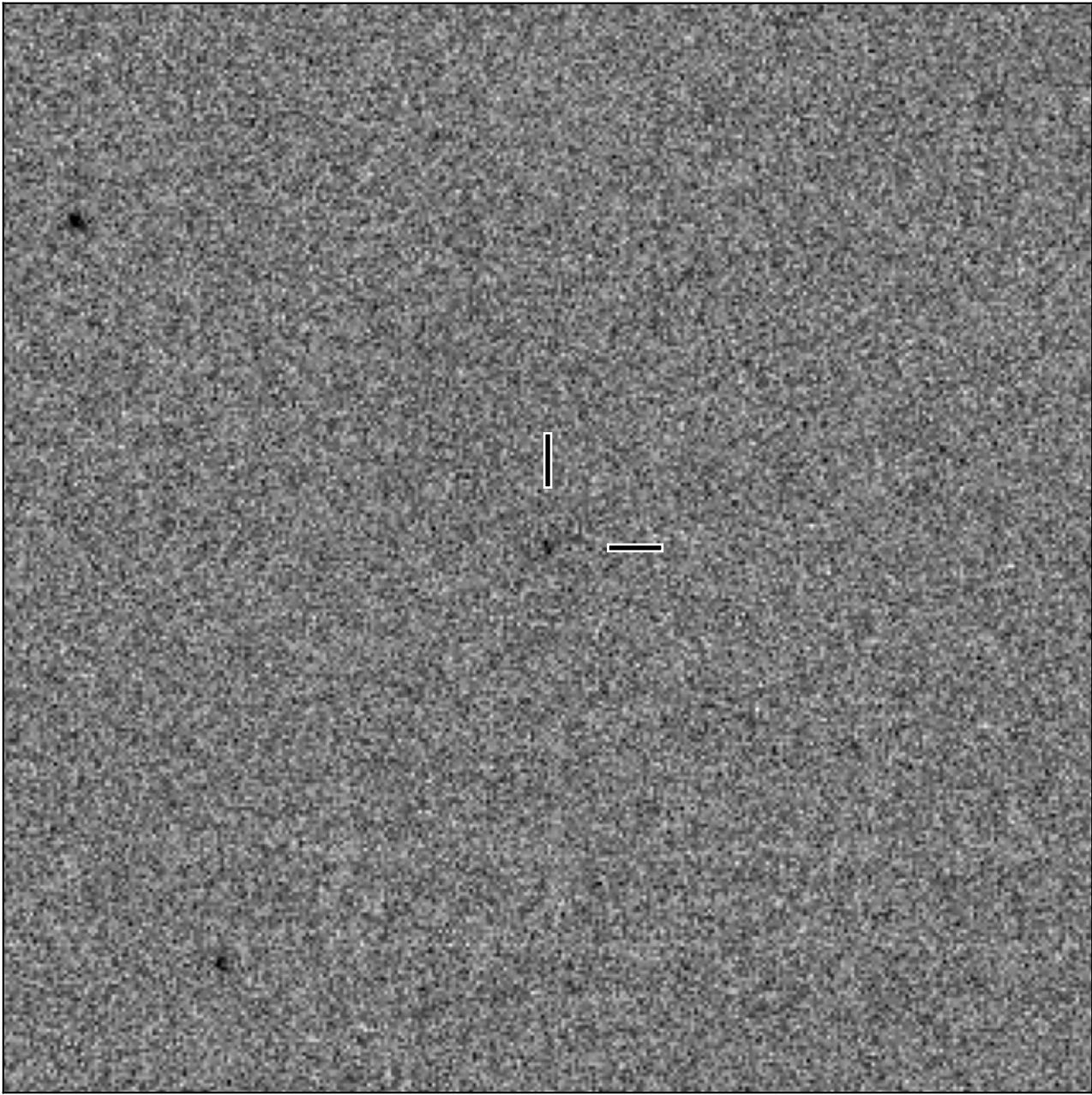


# BlackGEM-2 finding chart for BGEM J034228.38-223021.3

North

East



1'

Target: BGEM J034228.38-223021.3  
RA (ICRS): 3:42:28.38 (55.6183 deg)  
DEC (ICRS): -22:30:21.35 (-22.5059 deg)  
Image: BG2\_20250110\_015439\_red  
Filter: q  
Limiting magnitude: 20.10 ( $5\sigma$ )  
Finding chart size: 3.0x3.0 arcmin