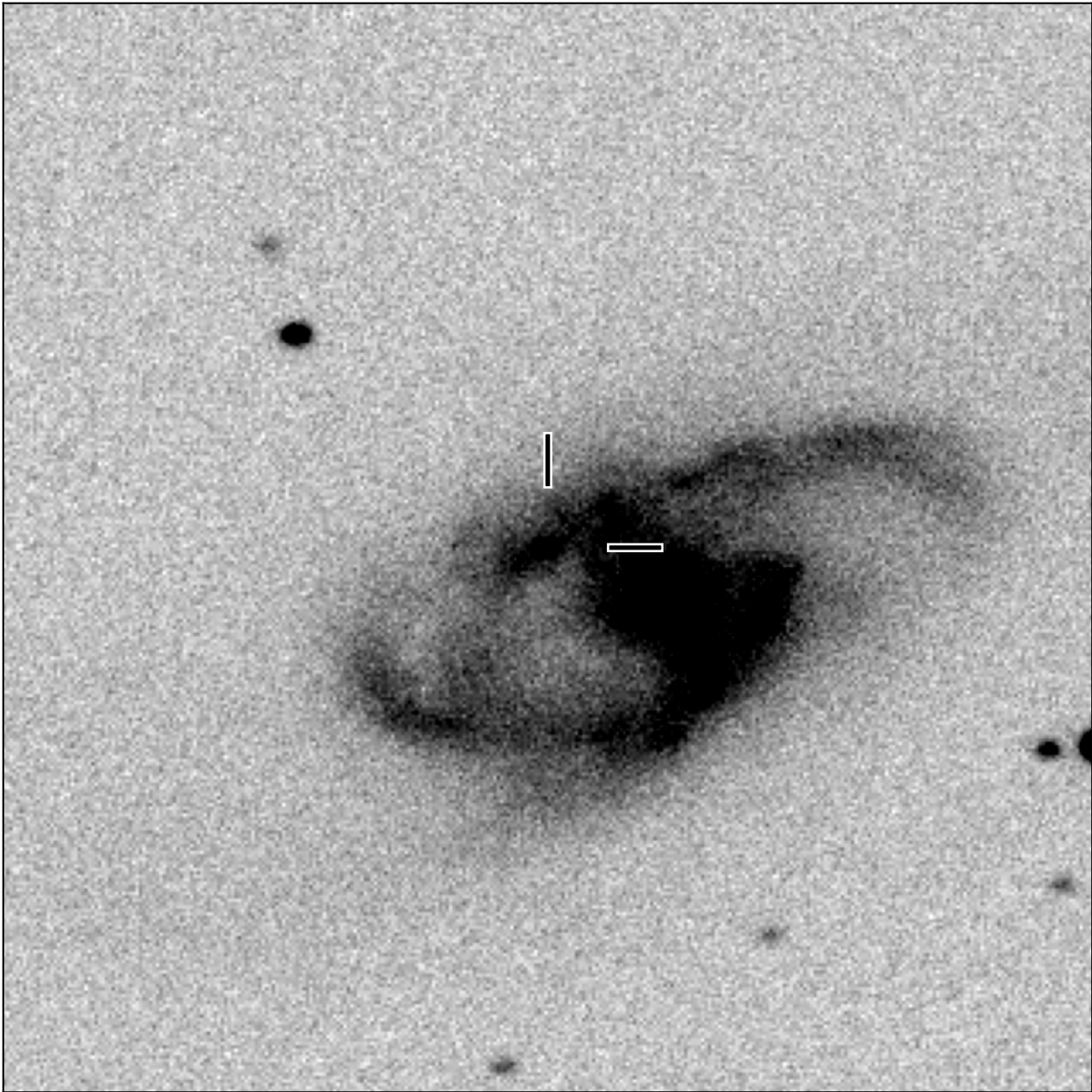


# BlackGEM-2 finding chart for BGEM J003416.87-274805.3

North

East



1'

Target: BGEM J003416.87-274805.3  
RA (ICRS): 0:34:16.87 (8.5703 deg)  
DEC (ICRS): -27:48:05.33 (-27.8015 deg)  
Image: BG2\_20250519\_101028\_red  
Filter: q  
Limiting magnitude: 19.88 ( $5\sigma$ )  
Finding chart size: 3.0x3.0 arcmin