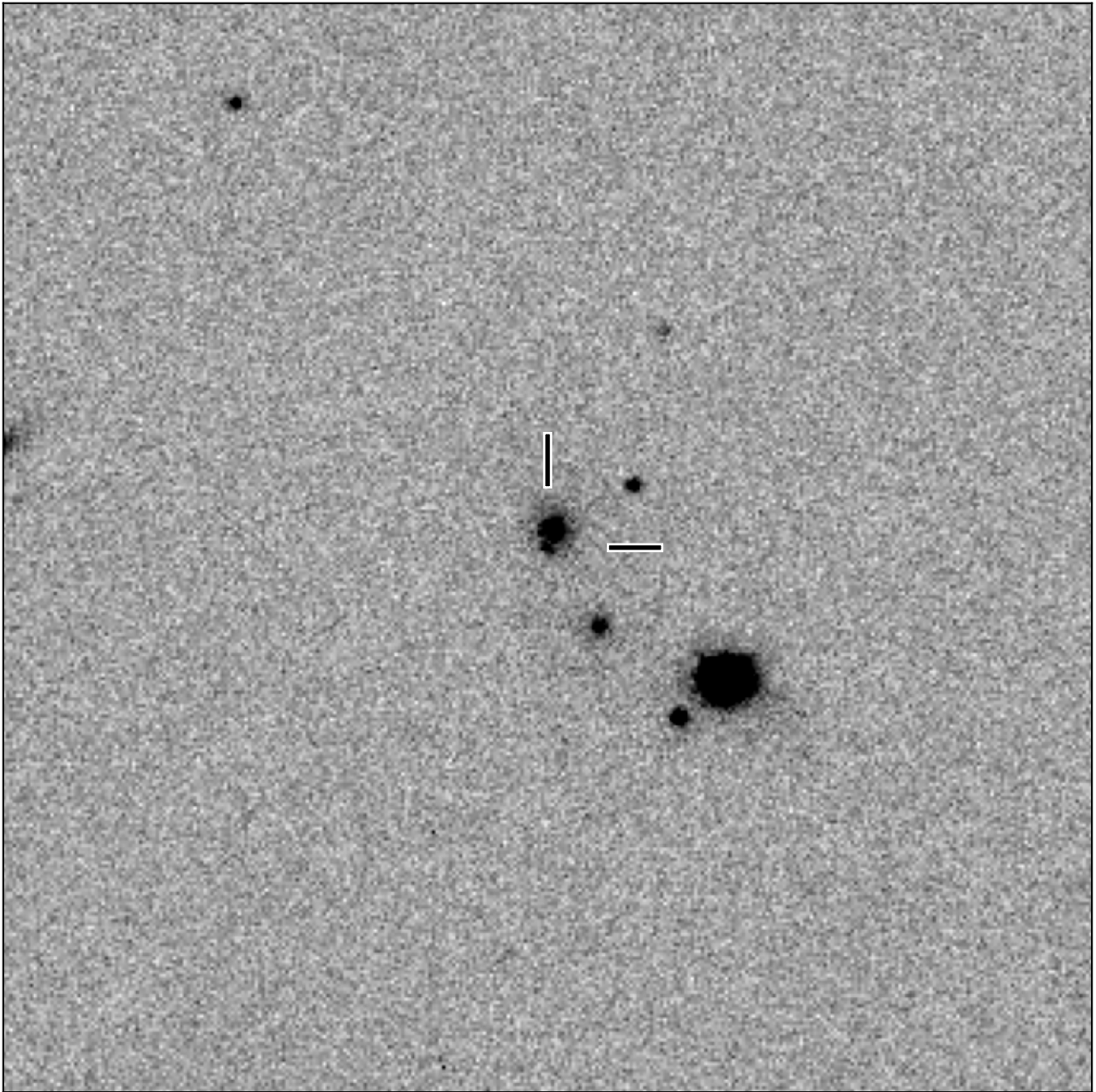


# BlackGEM-2 finding chart for BGEM J112148.54-053837.6

North

East



1'

Target: BGEM J112148.54-053837.6  
RA (ICRS): 11:21:48.55 (170.4523 deg)  
DEC (ICRS): -5:38:37.69 (-5.6438 deg)  
Image: BG2\_20250121\_054801\_red  
Filter: q  
Limiting magnitude: 20.28 ( $5\sigma$ )  
Finding chart size: 3.0x3.0 arcmin